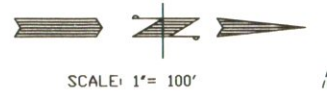
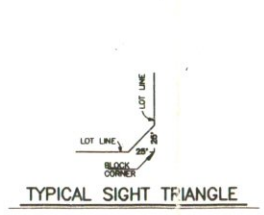




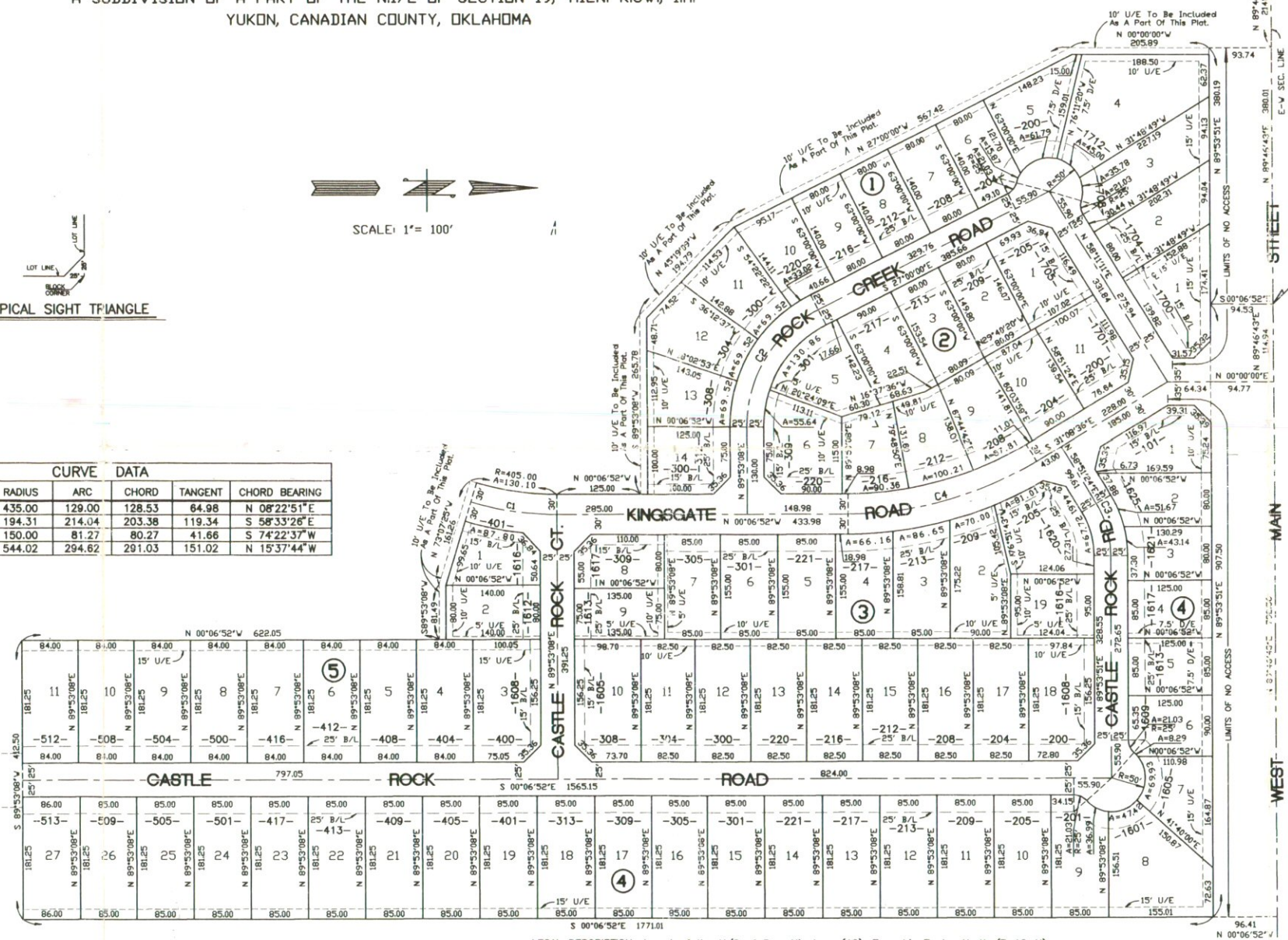
WESTPORT 66

A SUBDIVISION OF A PART OF THE N.1/2 OF SECTION 19, T.12N. R.5W., I.M.
 YUKON, CANADIAN COUNTY, OKLAHOMA



CURVE DATA					
CURVE	DELTA	RADIUS	ARC	TANGENT	CHORD BEARING
1	16°59'27"	435.00	129.00	128.53	N 08°22'51"E
2	6°06'52"	194.31	214.04	203.38	S 58°33'26"E
3	3°10'27"	150.00	81.27	80.27	S 74°22'37"W
4	3°10'45"	544.02	294.62	291.03	N 15°37'44"W

80' x 80' TEMP. EASEMENT FOR TURN AROUND



LEGAL DESCRIPTION: A part of the N/2 of Sec. Nineteen (19), Township Twelve North (T-12-N), Range Five West (R-5-W) of the Indian Meridian and more particularly described as follows:
 Commencing at the NE Cor. of the NW/4 of said Sec. 19;
 Thence S 00°06'52"E along the East Line of said NW/4 a distance of 94.53 feet to a point on the South right-of-way line of State Highway No. 66 said point being the point or place of beginning;
 Thence N 89°53'08"E along said South right-of-way line a distance of 907.50 feet;
 Thence S 00°06'52"E a distance of 1771.01 feet;
 Thence S 89°53'08"W a distance of 412.50 feet;
 Thence N 00°06'52"W a distance of 622.05 feet;
 Thence S 89°53'08"W a distance of 81.49 feet;
 Thence N 73°07'25"W a distance of 161.26 feet to a point of curvature;
 Thence Northerly along a curve to the left having a radius of 405.00 feet for a distance of 130.10 feet and a chord bearing of N 09°05'18"E and a chord length of 129.54 feet;
 Thence N 00°06'52"W a distance of 125.00 feet;
 Thence S 89°53'08"W a distance of 265.78 feet;
 Thence N 45°19'06"W a distance of 194.79 feet;
 Thence N 27°00'00"W a distance of 567.42 feet;
 Thence N 00°00'00"W a distance of 205.89 feet to a point on the South right-of-way line of said State Highway No. 66;
 Thence N 89°53'51"E along said South right-of-way line a distance of 380.19 feet to the point or place of beginning.
 Containing 32.762 Acres more or less.

JGVE

WESTPORT 66

124 NW10th STREET
 OKLA. CITY, OKLA. 73103
 405-238-8313

ENGINEERS
 SURVEYORS
 PLANNERS

Sheet 2 of 2