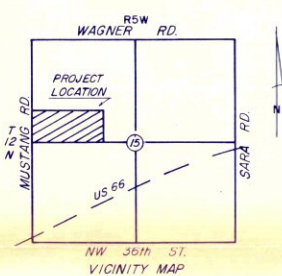
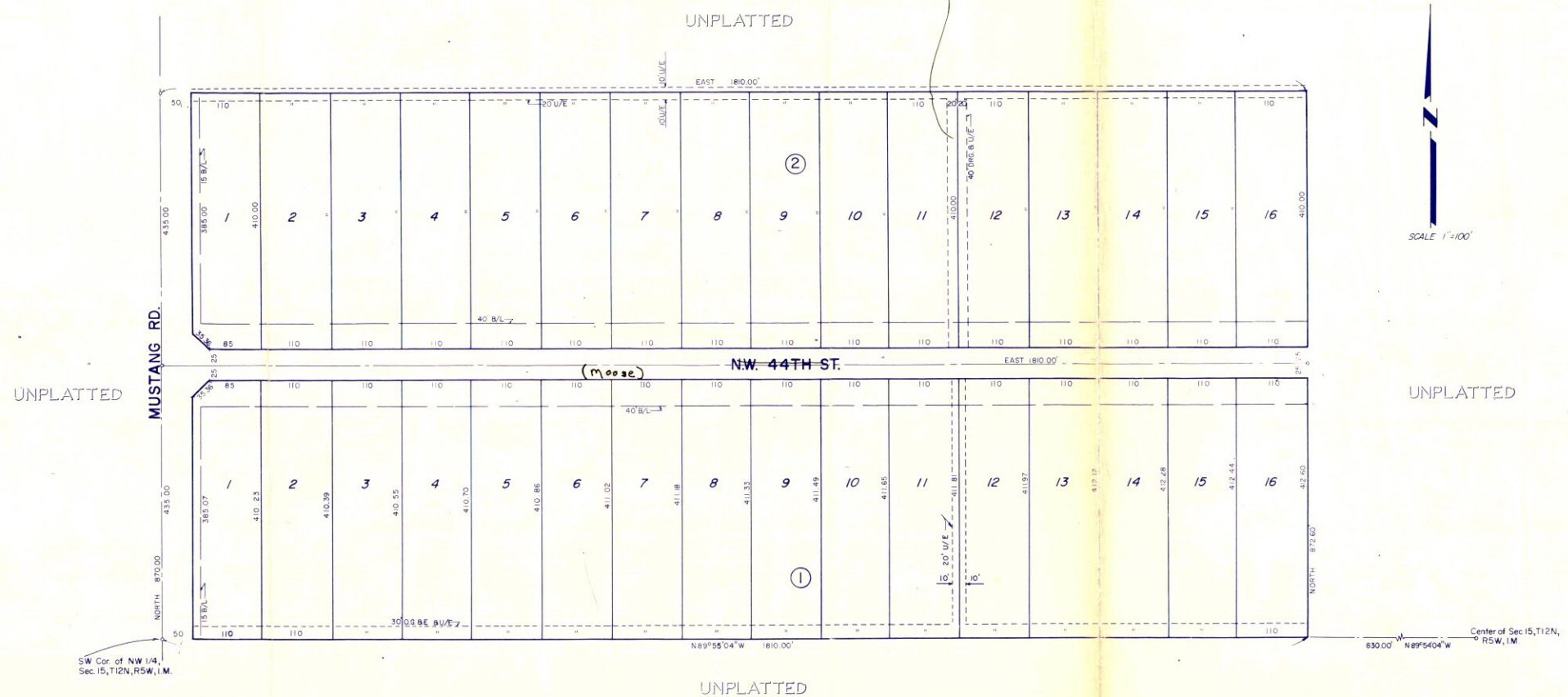


VON ELM ESTATES³²

A SUBDIVISION OF A PART OF THE NW 1/4, SEC. 15, T12N, R5W, 1.M.
YUKON, OKLAHOMA
CANADIAN COUNTY, OKLAHOMA



DESCRIPTION

A tract, piece, or parcel of land lying in the NW 1/4, Sec. 15, T12N, R5W, 1.M. more particularly described as follows: Beginning at the SW corner of said NW 1/4, Thence S89°55'04"E a distance of 1810.0 feet, thence North a distance of 872.00 feet, thence West a distance of 1810.0 feet, Thence South 870.0 feet to the point or place of Beginning containing 36.19 acres more or less.