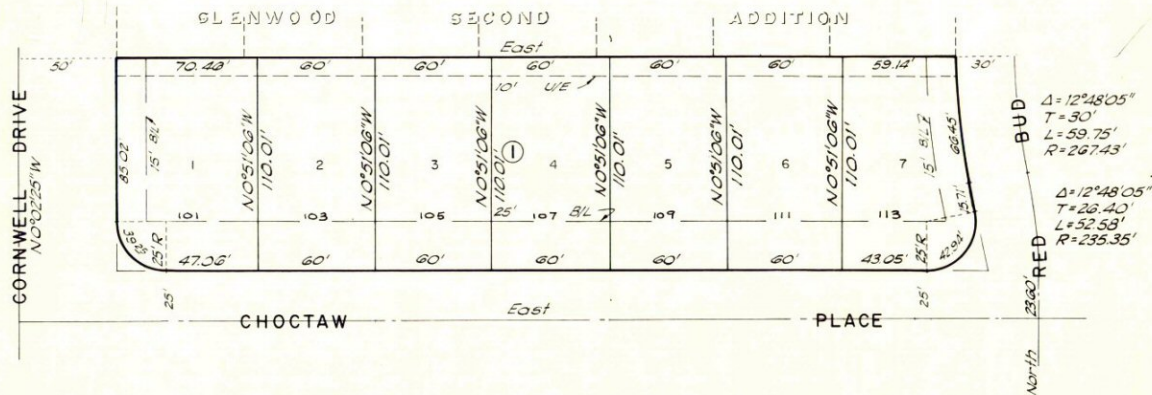


REPLAT OF BLOCK I TRAIL RIDGE ADDITION

A SUBDIVISION OF PART OF THE NW 1/4, SEC. 28, T12N, R5W, I.M.
YUKON, OKLAHOMA
CANADIAN COUNTY, OKLAHOMA

State of Oklahoma } SS
Canadian County }
Filed for record April 30 1922
at 3:00 P. M. and recorded in
Book 5 Page 25
Fee \$ 5.00
FRANCES C. BREMSETH
COUNTY CLERK
Elizabeth C. Bailey Deputy



$\Delta = 12^{\circ}48'05''$
 $T = 30'$
 $L = 59.75'$
 $R = 267.43'$

$\Delta = 12^{\circ}48'05''$
 $T = 26.40'$
 $L = 52.58'$
 $R = 235.35'$