

TRAIL RIDGE ADDITION

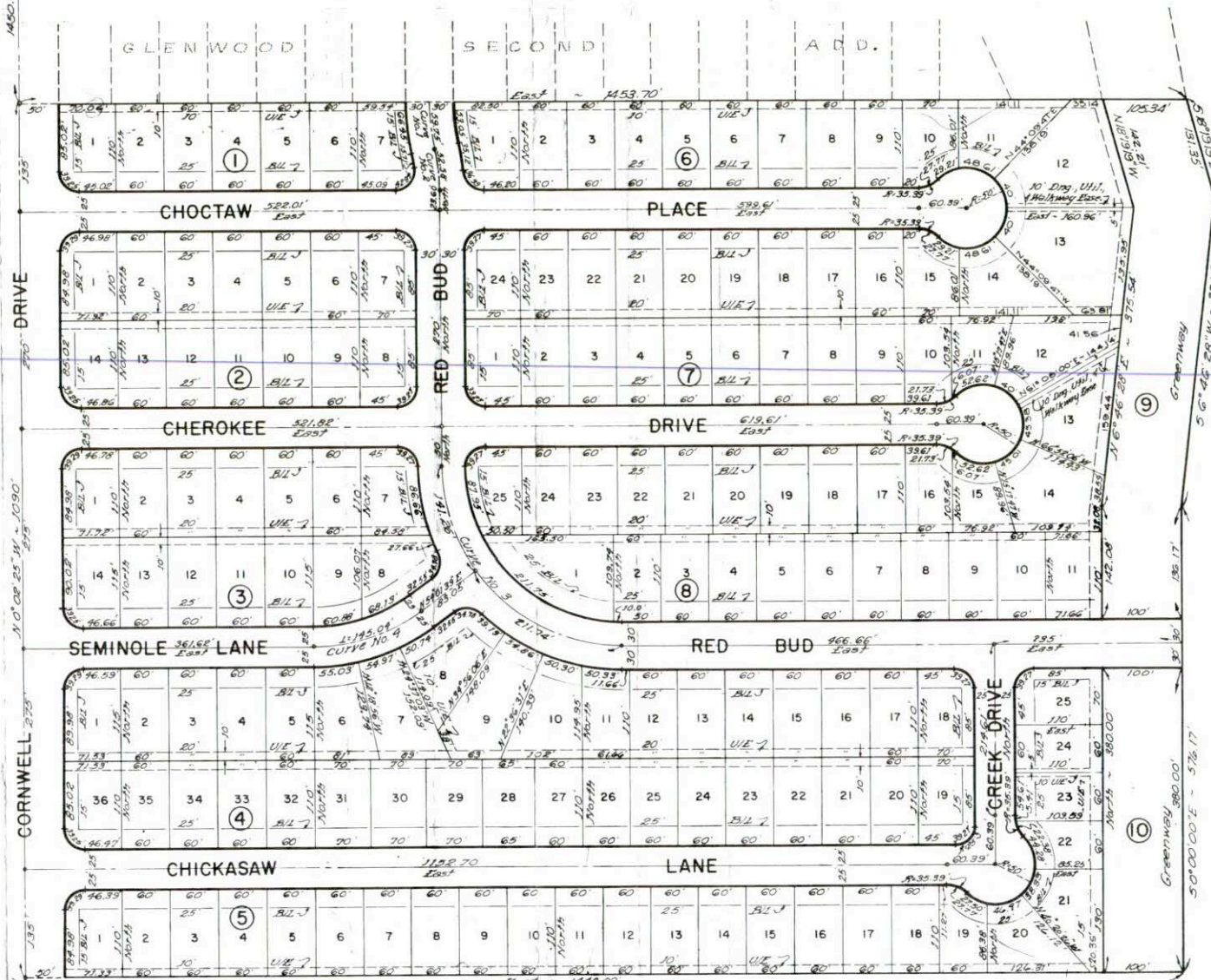
A SUBDIVISION OF PART OF THE NW 1/4, SEC. 28, T12N, R5W, I.M.

YUKON, OKLAHOMA

CANADIAN COUNTY, OKLAHOMA

NW Cor. NW 1/4
Sec. 28, T12N, R5W, I.M.

State of Oklahoma } SS
Canadian County }
Filed for record Oct 27 1972
at 10:00 A.M. and recorded in
Book 5 Page 15
Fee \$ 5.00
FRANCES C. BREMSETH
COUNTY CLERK
By Elizabeth Kelling Deputy



SCALE: 1" = 100'

NOTE: All Black Corners Have a 25' Radius

SW Cor NW 1/4
Sec 28, T12N, R5W, I.M.

§ CURVE DATA:

Curve No.	Δ	T	L	R
1	12° 48' 05"	30'	39.75'	267.43'
2	12° 48' 05"	26.40'	52.58'	235.35'
3	90° 00' 00"	225'	353'	225'
4	35° 58' 21"	75'	145.04'	231.02'

DESCRIPTION

A tract, piece or parcel of land lying in the NW 1/4 of Section 28, T12N, R5W, I.M. more particularly described as follows: Beginning at a point on the West Section line a distance of 1450.00 feet 50°02'25"E of the Northwest corner of said NW 1/4; Thence N50°00'00"E a distance of 1453.70 feet; Thence S18°19'19"E a distance of 131.35 feet; Thence S6°46'28"W a distance of 391.85 feet; Thence 50°00'00"E a distance of 576.17 feet; Thence N90°00'00"W a distance of 1448.00 feet to a point on the West line of said NW 1/4 said point being 93.29 feet N0°02'25"W of the Southwest corner of said NW 1/4; Thence N0°02'25"W a distance of 1090.00 feet to the point or place of Beginning containing 36.523 Acres more or less.

DAVILA ENGINEERING CO.
7300 N.W. 23rd Bethany, Oklahoma

TRAIL RIDGE ADDITION
SHEET 2 OF 2