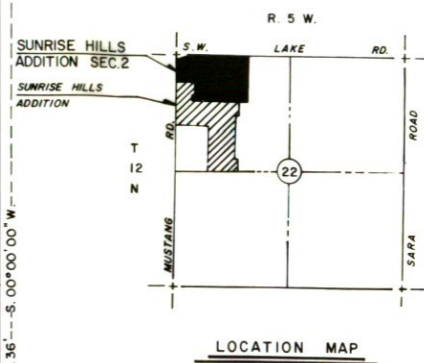
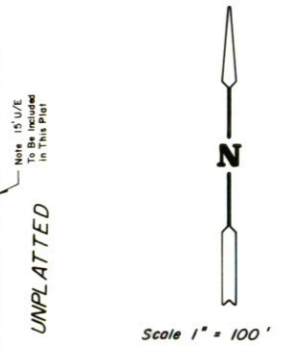
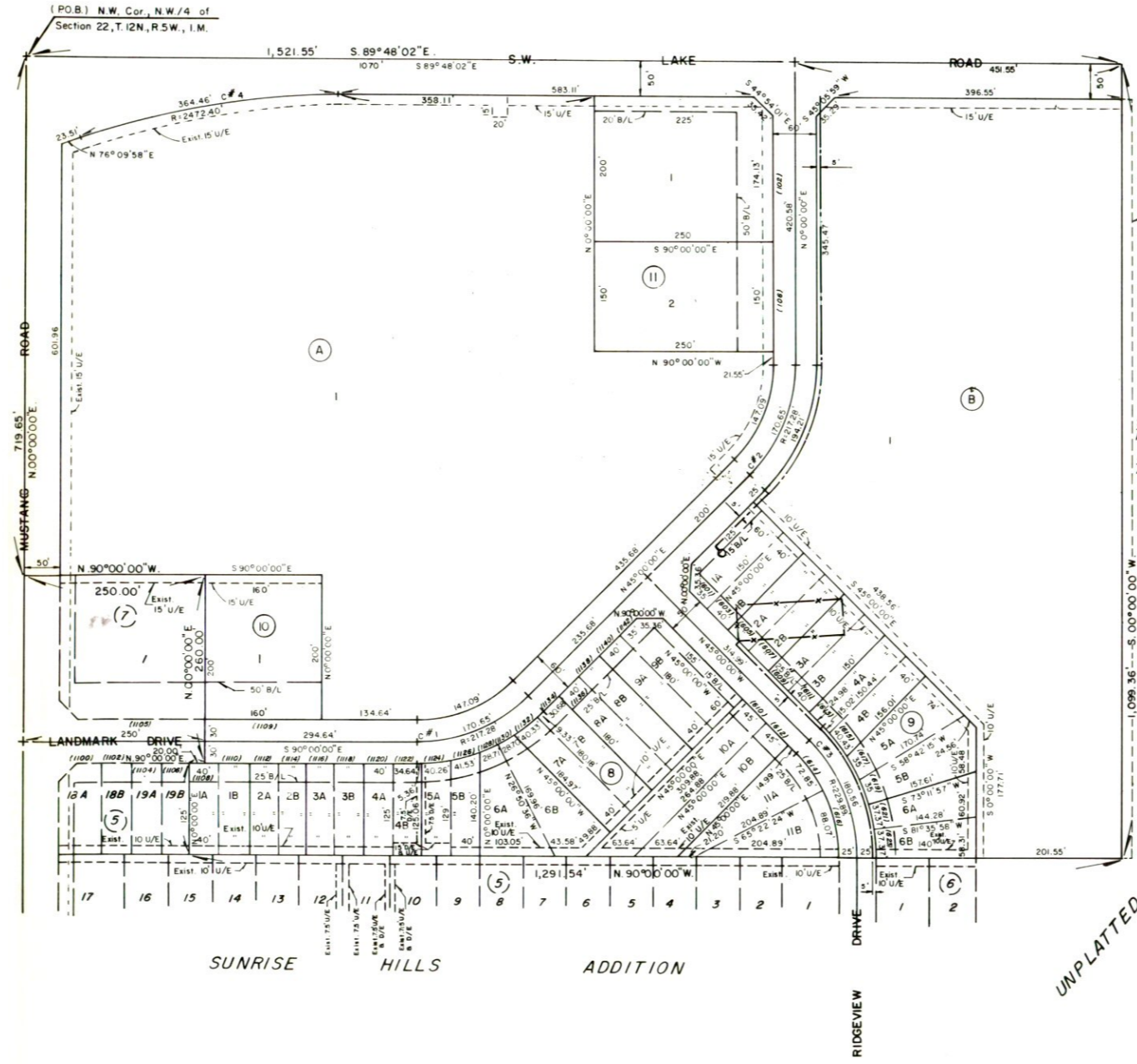


SUNRISE HILLS ADDITION SECTION 2

BEING A PART OF N.W./4, SECTION 22, T.12N., R.5W. OF THE I.M.
YUKON, CANADIAN COUNTY, OKLAHOMA



- Well Site At Time of Platting
- x— Tank Battery At Time of Platting
- - - Oil Lease Line Location

NOTE: LOTS 1A, 1B, 2A, 2B & 3A WILL NOT BE USED AS BUILDING SITES UNTIL SUCH TIME THAT THE OIL WELL & TANK BATTERY ARE ABANDONED.

CURVE DATA					
Curve No.	Δ	R	L	C	T
N.R.	45°00'00"	187.28'	147.09'	143.34'	77.57'
1. E.	45°00'00"	217.28'	170.65'	166.30'	90.00'
S. R.	45°00'00"	247.28'	194.21'	189.26'	102.43'
W. R.	45°00'00"	187.28'	147.09'	143.34'	77.57'
2. E.	45°00'00"	217.28'	170.65'	166.30'	90.00'
E. R.	45°00'00"	247.28'	194.21'	189.26'	102.43'
SW. R.	45°00'00"	204.89'	160.92'	156.82'	84.87'
3. E.	45°00'00"	229.89'	180.56'	175.95'	95.22'
NE. R.	45°00'00"	254.89'	200.19'	195.09'	105.58'
4.	08°26'46"	2472.40'	364.46'	364.13'	182.56'

This reproduction meets the requirements as outlined in Senate Bill 377, Section 518, as amended.

TRIANGLE/A & E, Inc.
BOX 306 OKLAHOMA CITY 73101

DESIGN ENGINEERS, INC.
1614 GREENBRIAR PLACE
 OKLAHOMA CITY, OKLAHOMA 73159
 (405) 691-6333