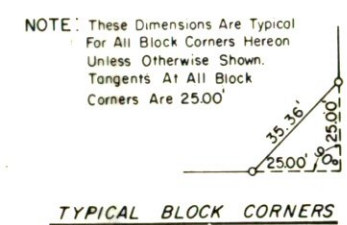
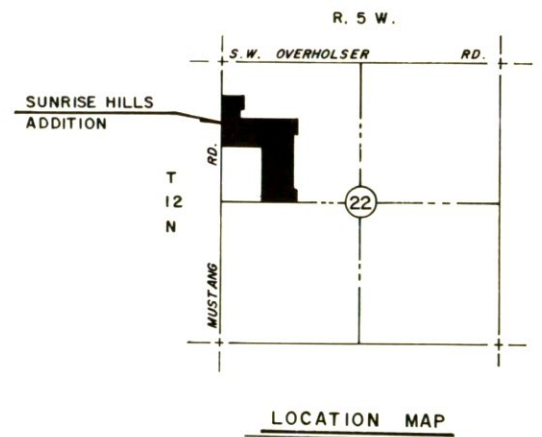
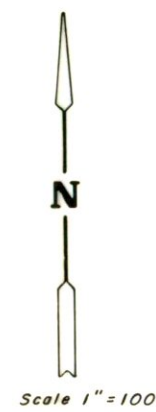
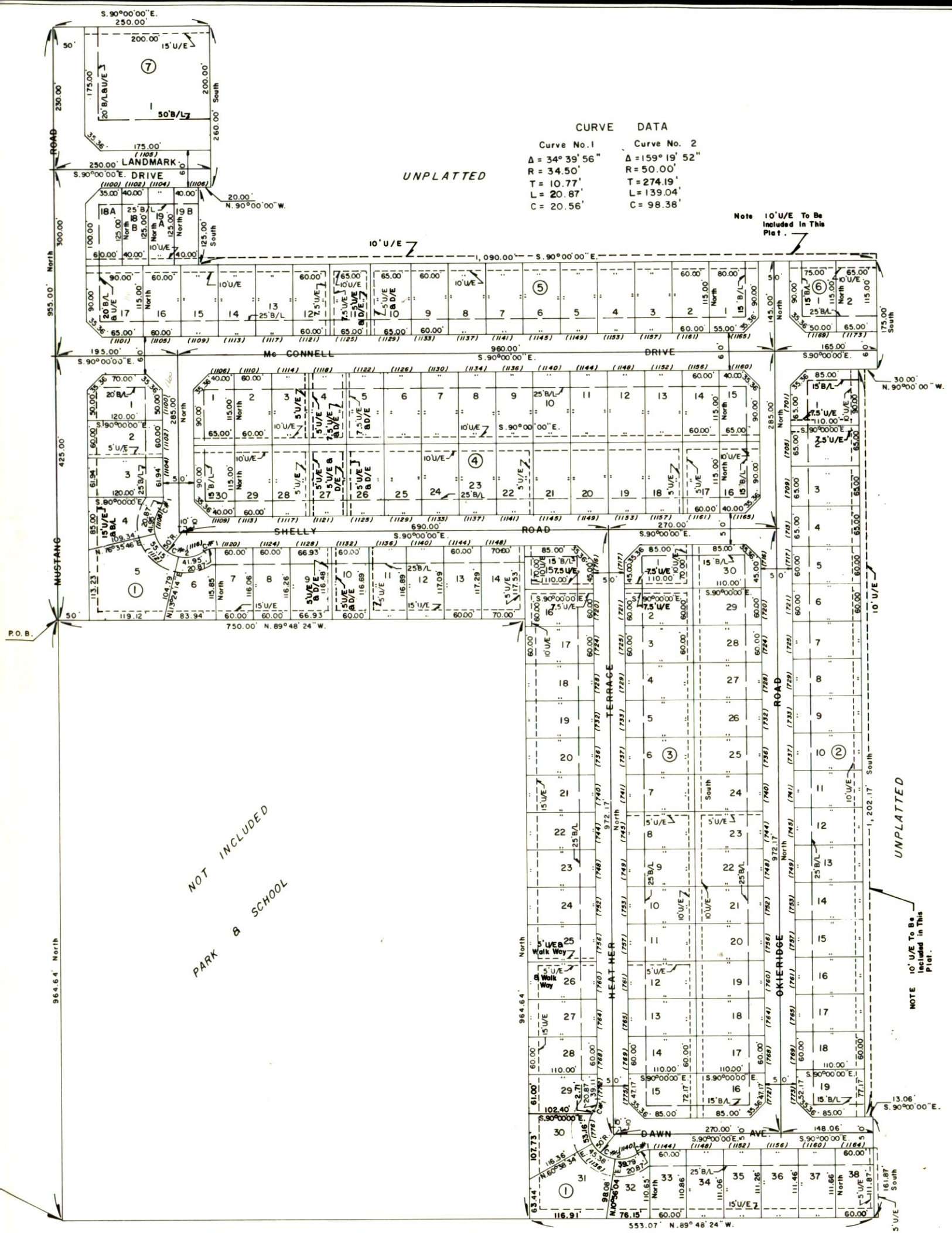


SUNRISE HILLS ADDITION

BEING A PART OF N.W./4, SECTION 22, T.12N., R.5W. OF THE I.M.
YUKON, CANADIAN COUNTY, OKLAHOMA



This reproduction meets the requirements as outlined in Senate Bill 377, Section 518, as amended.

TRIANGLE/A & E, Inc.
803 306 OKLAHOMA CITY 73101

REA ENGINEERING & ASSOCIATES, INC.
1614 Greenbriar Place
OKLAHOMA CITY, OKLAHOMA 73159
(405) 691-6333

S.W. Corner, of N.W./4
Section 22, T.12N., R.5W., I.M.

UNPLATTED

OWNER'S CORPORATE SEAL	OWNER'S NOTARY SEAL	LAND SURVEYOR'S SEAL	SURVEYOR'S NOTARY SEAL	BONDED ABSTRACTER'S SEAL	COUNTY TREASURER'S SEAL	CITY CORPORATE SEAL
------------------------------	---------------------------	----------------------------	------------------------------	--------------------------------	-------------------------------	---------------------------