

FINAL PLAT OF
STONE CREEK ADDITION
 A PART OF SECTION NINETEEN (19)
 T12N, R5W, I.M., CITY OF YUKON, CANADIAN COUNTY, OKLAHOMA

CURVE TABLE					
NUMBER	DELTA	RADIUS	LENGTH	CHD BEARING	
C1	89°42'00"	125.00'	195.70'	178.31'	N 44°51'00" E
C2	41°24'36"	50.00'	36.14'	35.36'	N 20°42'18" W
C3	172°31'10"	50.00'	150.55'	99.79'	N 44°51'00" E
C4	41°24'36"	50.00'	36.14'	35.36'	S 66°35'42" E
C5	41°24'36"	50.00'	36.14'	35.36'	N 66°59'43" E
C6	173°07'09"	50.00'	151.07'	99.82'	S 45°09'00" E
C7	41°24'36"	50.00'	36.14'	35.36'	S 20°42'17" W
C8	41°24'36"	50.00'	36.14'	35.36'	S 20°42'17" E
C9	97°10'51"	50.00'	229.39'	75.00'	N 90°00'00" W
C10	41°24'36"	50.00'	36.14'	35.36'	N 20°42'17" E
C11	41°24'36"	50.00'	36.14'	35.36'	S 20°42'17" W
C12	97°10'51"	50.00'	229.39'	75.00'	N 90°00'00" W
C13	41°24'36"	50.00'	36.14'	35.36'	N 20°42'17" E

LOT LINE TABLE		
NUMBER	DIRECTION	DISTANCE
L1	N 45°09'00" W	35.28'
L2	S 44°51'00" W	35.45'
L3	N 44°51'00" E	35.45'
L4	N 45°09'00" W	35.28'
L5	N 44°51'00" E	35.45'
L6	S 45°09'02" E	35.28'
L7	N 44°51'00" E	35.45'
L8	S 45°09'00" E	35.28'
L9	N 44°51'00" E	35.45'
L10	S 45°09'00" E	35.28'

LEGEND:

- B.L.L. - BUILDING LIMIT LINE
- U/E - UTILITY EASEMENT
- D/E - DRAINAGE EASEMENT
- L.N.A. - LIMITS OF NO ACCESS
- ⊙ - RADIIUS
- ⊙ - INDICATES 3/8" IRON PIN (SET)
- - INDICATES 3/8" IRON PIN (FOUND)

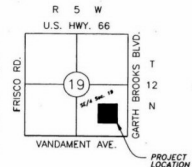
LEGAL DESCRIPTION:

A TRACT OF LAND LOCATED IN THE SOUTHWEST QUARTER (SE/4) OF SECTION 19, TOWNSHIP 12 NORTH, RANGE 5 WEST OF THE IRVING MERIDIAN, CANADIAN COUNTY, OKLAHOMA, MORE PARTICULARLY DESCRIBED AS FOLLOWS:
 COMMENCING AT THE SOUTHWEST CORNER OF THE SE/4 OF SAID SECTION 19, THENCE NORTH 89°42'00" EAST ALONG THE SOUTH LINE OF SAID SE/4 A DISTANCE OF 1111.73 FEET; THENCE NORTH 89°42'00" EAST A DISTANCE OF 892.29 FEET TO THE POINT OF BEGINNING; THENCE CONTINUING NORTH 02°00'00" EAST AND ALONG THE EAST LINE OF BLOCK 1 AND 2 IN THE WESTPORT C&M ADDITION TO THE CITY OF YUKON FOR A DISTANCE OF 338.28 FEET; THENCE NORTH 89°42'00" EAST A DISTANCE OF 968.03 FEET; THENCE SOUTH 02°00'00" EAST ALONG THE WEST LINE OF BLOCK 2 IN THE FIRST NATIONAL OFFICE PARK SECTION 2 ADDITION FOR A DISTANCE OF 239.39 FEET; THENCE SOUTH 89°43'31" WEST A DISTANCE OF 968.02 FEET TO THE POINT OF BEGINNING, AND CONTAINING 20.86 ACRES MORE OR LESS.

NOTES:

SEWERLINES SHALL BE CONSTRUCTED ALONG ALL INTERIOR STREETS AND ALSO WESTPORT BLVD ACCORDING TO CITY STANDARDS.

COMMON LOT "X" SHALL BE MAINTAINED BY A PROPERTY OWNERS ASSOCIATION.

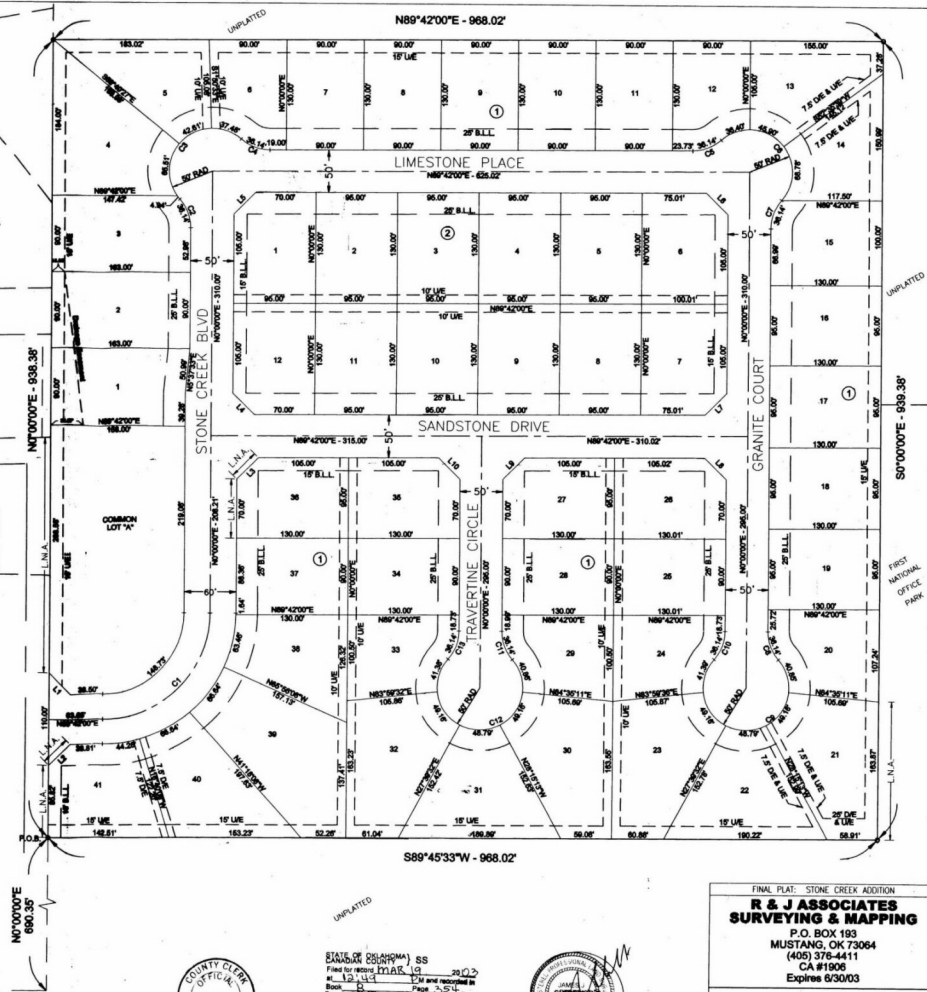


LOCATION MAP
 NOT TO SCALE

SCALE:
 1" = 60'

SW Cor. of the SE/4
 Sec. 19, T12N-R5W

N89°42'00"E - 1111.73'



STATE OF OKLAHOMA) SS
 FILED TO RECORD: MAR 18 2012
 BY: J. L. GALT, C. L. & M. W. WILSON
 COUNTY CLERK
 COUNTY OF OKLAHOMA
 BY: [Signature] Deputy



FINAL PLAT: STONE CREEK ADDITION
R & J ASSOCIATES
SURVEYING & MAPPING
 P.O. BOX 193
 MUSTANG, OK 73064
 (405) 378-4411
 CA #1906
 Expires 6/30/03

JTK ENGINEERING CO.
 37906 Wolverine Road
 Shawnee, OK 74804
 (405) 964-6636
 CA #4188
 Expires 6/30/03