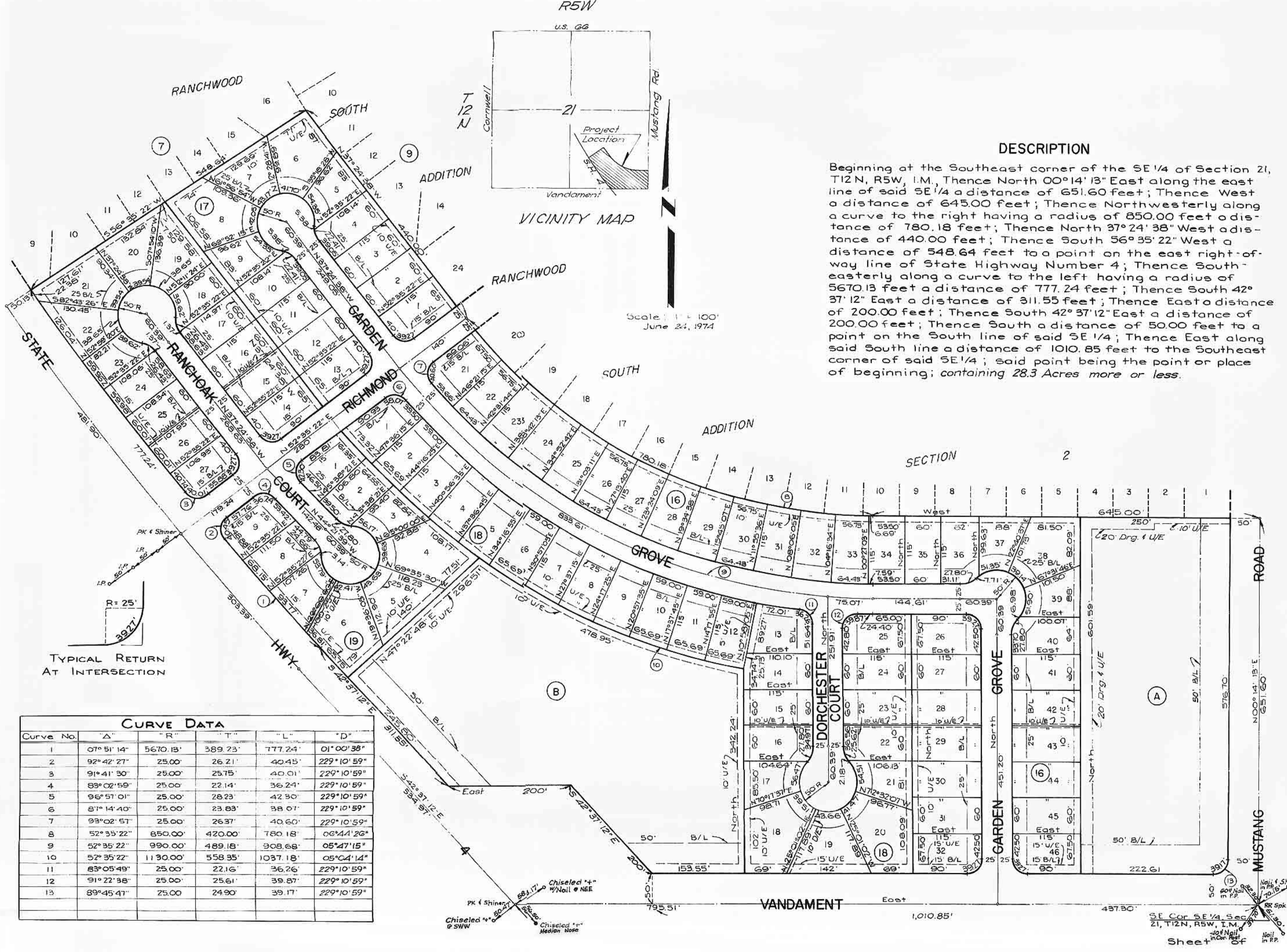
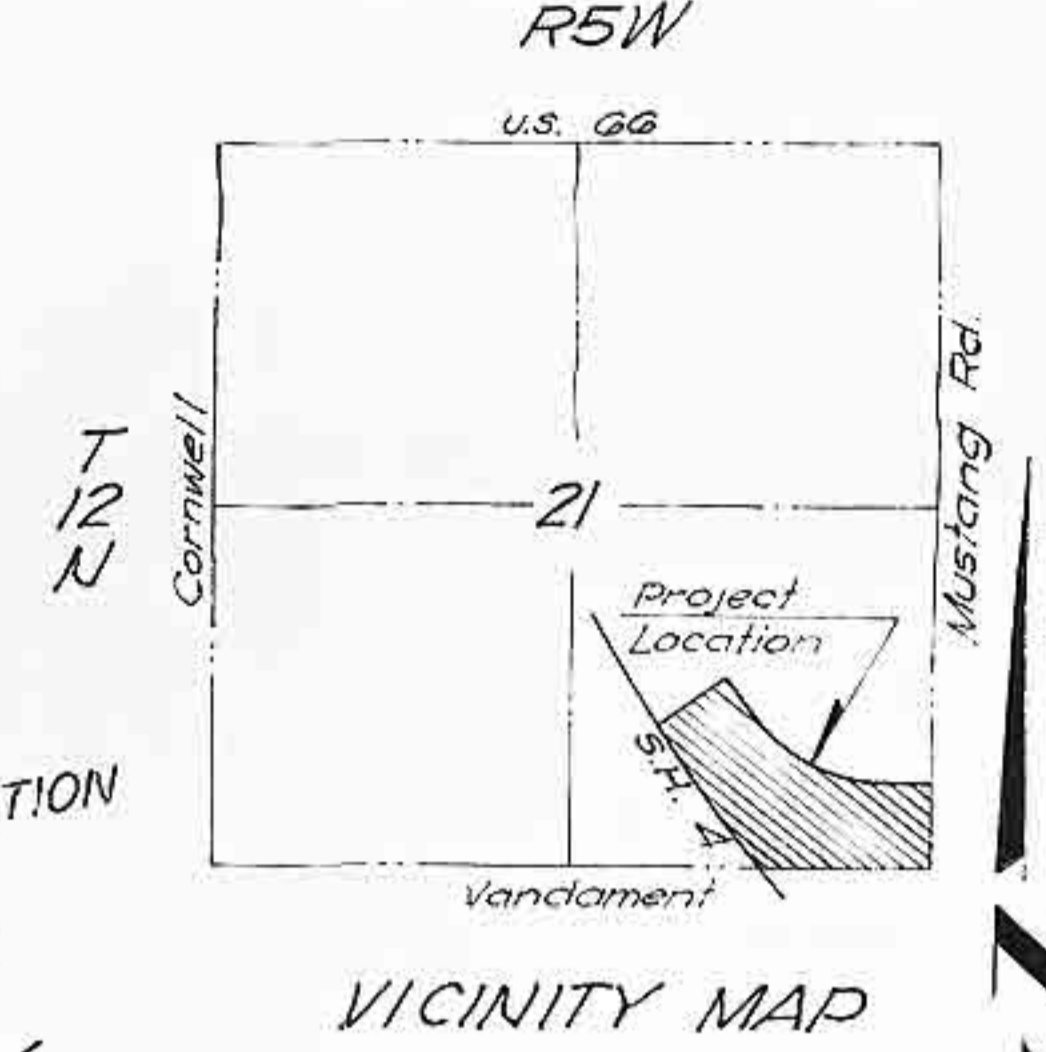


# RANCHWOOD SOUTH ADDITION SECTION 3

A SUBDIVISION OF PART OF THE SE 1/4, SEC. 21, T12N, R5W, I.M.  
YUKON, OKLAHOMA — CANADIAN COUNTY, OKLAHOMA



CURVE DATA					
Curve No.	"Δ"	"R"	"T"	"L"	"D"
1	07°51'14"	5670.15'	389.23'	777.24'	01°00'38"
2	92°42'27"	25.00'	26.21'	40.45'	229°10'59"
3	91°41'30"	25.00'	25.75'	40.01'	229°10'59"
4	83°02'59"	25.00'	22.14'	36.24'	229°10'59"
5	96°57'01"	25.00'	28.23'	42.90'	229°10'59"
6	81°14'40"	25.00'	23.83'	38.01'	229°10'59"
7	93°02'57"	25.00'	26.37'	40.60'	229°10'59"
8	52°35'22"	650.00'	420.00'	780.18'	06°44'26"
9	52°35'22"	990.00'	489.18'	908.68'	06°47'15"
10	52°35'22"	1130.00'	558.35'	1037.18'	05°04'14"
11	83°09'49"	25.00'	22.16'	36.26'	229°10'59"
12	91°22'38"	25.00'	25.61'	39.87'	229°10'59"
13	89°45'47"	25.00'	24.90'	39.17'	229°10'59"

This reproduction meets the requirements as outlined in Senate Bill 377, Section 518, as amended.