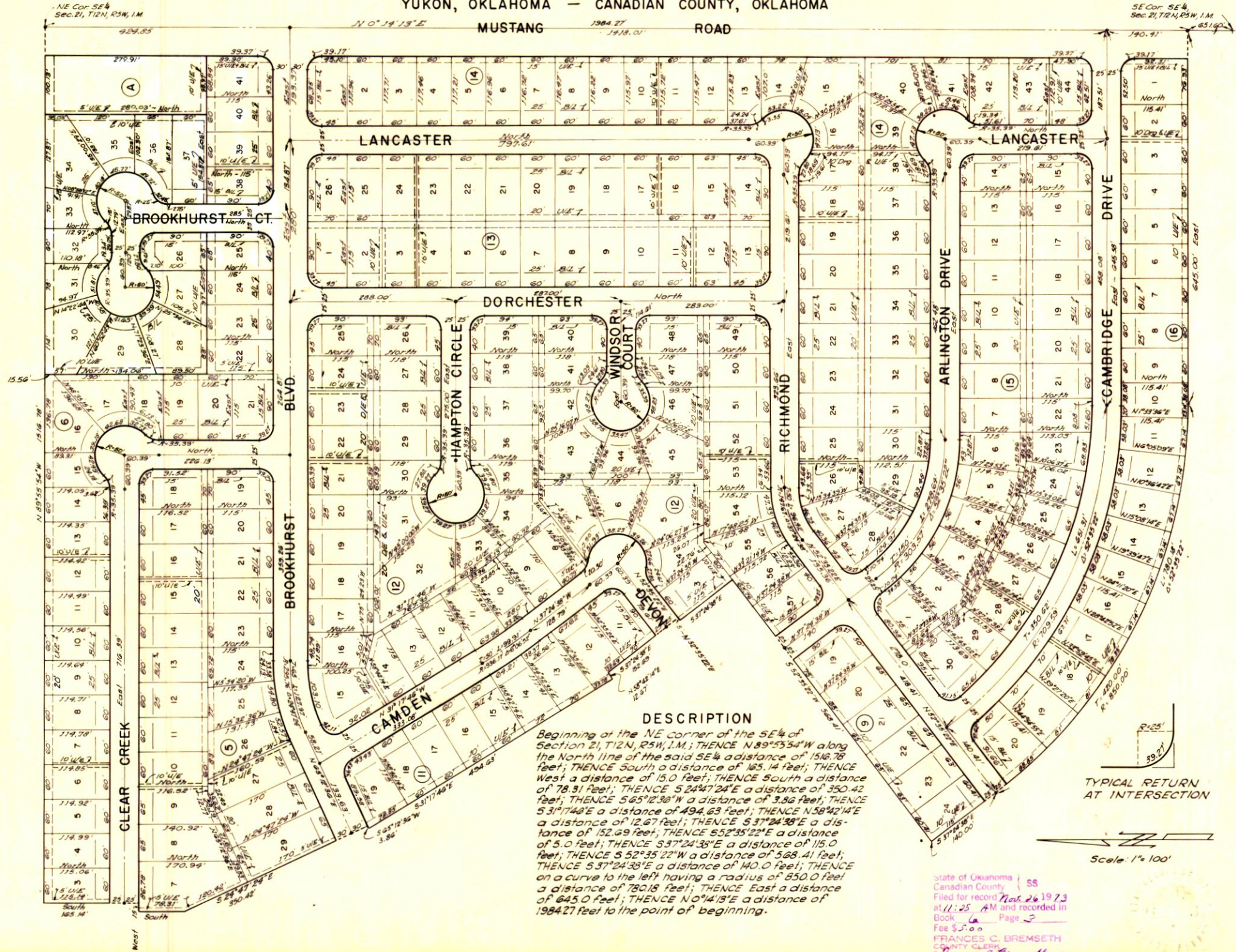


RANCHWOOD SOUTH ADDITION SECTION 2

A SUBDIVISION OF PART OF THE SE 1/4, SEC. 21, T12N, R5W, I.M.
YUKON, OKLAHOMA — CANADIAN COUNTY, OKLAHOMA



DESCRIPTION

Beginning at the NE corner of the SE 1/4 of Section 21, T12N, R5W, I.M.; THENCE N 89°53'54" W along the North line of the said SE 1/4 a distance of 1516.78 feet; THENCE South a distance of 165.14 feet; THENCE West a distance of 15.0 feet; THENCE South a distance of 78.31 feet; THENCE S 24°47'24" E a distance of 350.42 feet; THENCE S 65°12'36" W a distance of 3.86 feet; THENCE S 31°14'48" E a distance of 494.63 feet; THENCE N 58°42'14" E a distance of 12.67 feet; THENCE S 37°24'38" E a distance of 152.69 feet; THENCE S 52°35'22" E a distance of 5.0 feet; THENCE S 37°24'38" E a distance of 115.0 feet; THENCE S 52°35'22" W a distance of 568.41 feet; THENCE S 37°24'38" E a distance of 140.0 feet; THENCE on a curve to the left having a radius of 850.0 feet a distance of 780.18 feet; THENCE East a distance of 645.0 feet; THENCE N 0°14'13" E a distance of 1984.27 feet to the point of beginning.

TYPICAL RETURN AT INTERSECTION

Scale: 1" = 100'

State of Oklahoma | SS
Canadian County |
Filed for record Nov. 26 1973
at 11:25 AM and recorded in
Book 6 Page 5
Fee \$5.00
FRANCES C. BREMSETH
COUNTY CLERK
Frances C. Bremseth