

RANCHWOOD SOUTH ADDITION

A SUBDIVISION OF PART OF THE SE 1/4, SEC. 21, T12N, R5W, I.M.

YUKON, OKLAHOMA
CANADIAN COUNTY, OKLAHOMA

State of Oklahoma } SS
Canadian County }
Filed for record April 19 19 12
at 1:34 P. M and recorded in
Book 6 Page 2
Fee \$ 5.00
FRANCES C. BREMSETH
COUNTY CLERK
By *Edith Mallow* Deputy

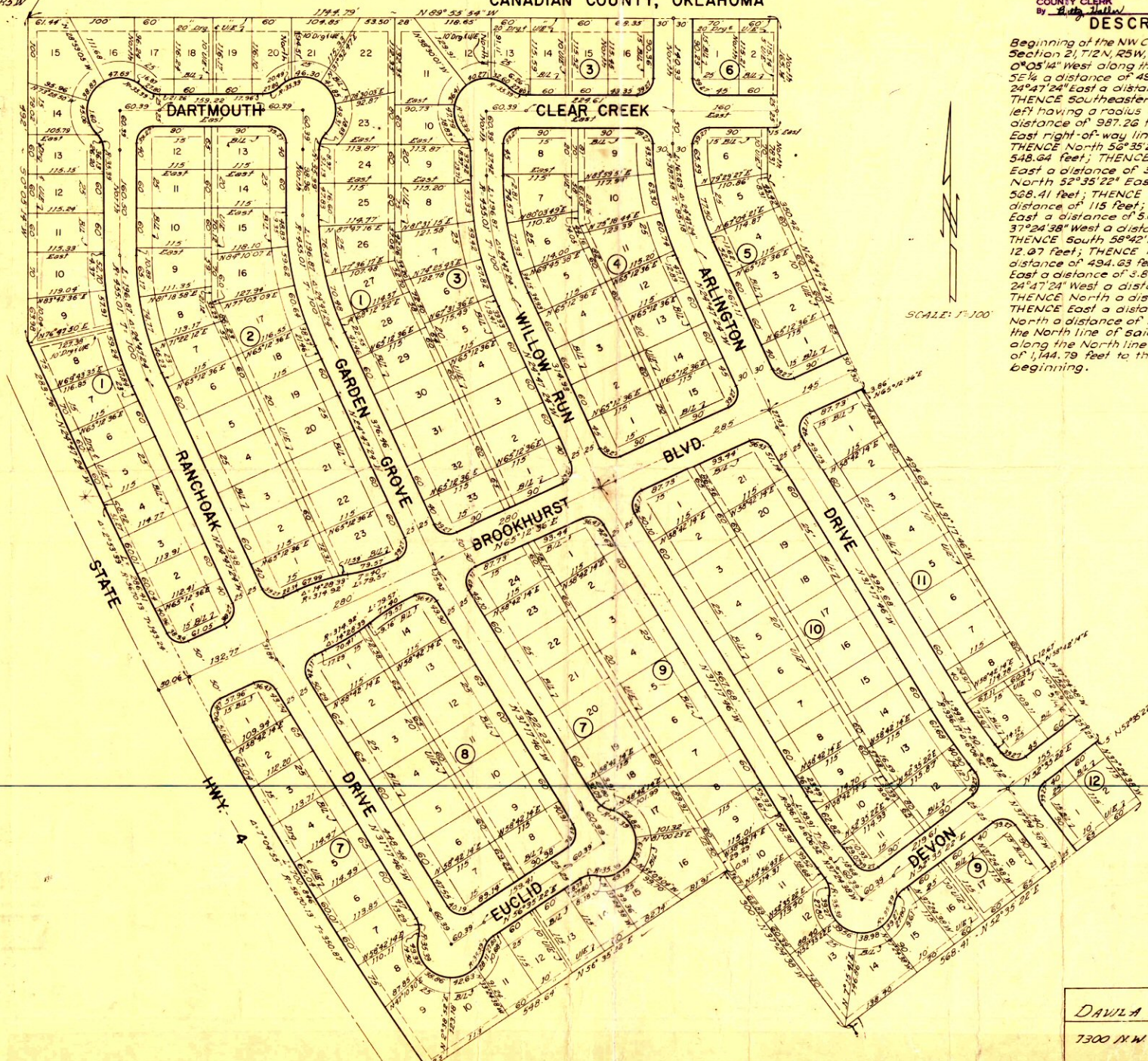
Page 2

NW Cor. SE 1/4
Sec. 21, T12N, R5W

DESCRIPTION

Beginning of the NW Corner of the SE 1/4 of Section 21, T12N, R5W, I.M.; THENCE South $0^{\circ}05'14''$ West along the West Line of said SE 1/4 a distance of 492 feet; THENCE South $24^{\circ}47'24''$ East a distance of 283.76 feet; THENCE Southeastly along a curve to the left having a radius of 5,670.13 feet a distance of 987.26 feet said line being the East right-of-way line of State Highway 4; THENCE North $56^{\circ}35'22''$ East a distance of 548.64 feet; THENCE South $31^{\circ}24'38''$ East a distance of 300 feet; THENCE North $52^{\circ}35'22''$ East a distance of 568.41 feet; THENCE North $37^{\circ}24'38''$ West a distance of 115 feet; THENCE North $52^{\circ}35'22''$ East a distance of 5.0 feet; THENCE North $37^{\circ}24'38''$ West a distance of 152.69 feet; THENCE South $58^{\circ}42'14''$ West a distance of 12.07 feet; THENCE North $31^{\circ}17'46''$ West a distance of 494.63 feet; THENCE North $65^{\circ}2'36''$ East a distance of 3.86 feet; THENCE North $24^{\circ}47'24''$ West a distance of 350.42 feet; THENCE North a distance of 78.31 feet; THENCE East a distance of 15.0 feet; THENCE North a distance of 165.14 feet to a point on the North line of said SE 1/4; THENCE West along the North line of said SE 1/4 a distance of 1,144.79 feet to the point or place of beginning.

SCALE: 1"=100'



3626

DAVILA ENGINEERING Co.

7300 N.W. 23, Bethany, OKLA