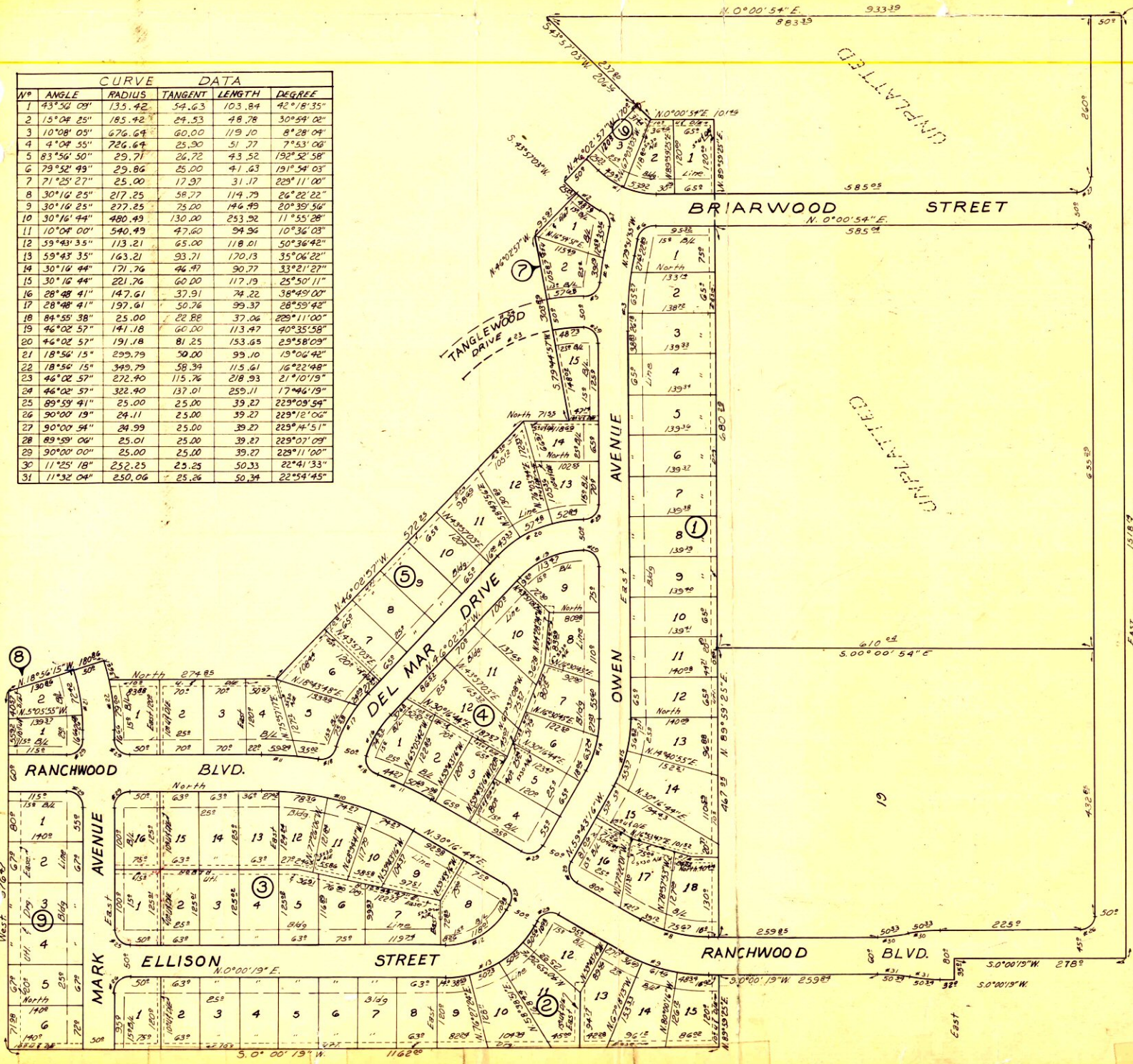


F. Cor. SW. 1/4,
Sec. 16, T. 12N, R. 5W. 1.M.

CURVE DATA				
Nº	ANGLE	RADIUS	TANGENT	LENGTH
1	43°52'09"	135.42	54.63	103.84
2	15°04'25"	185.42	24.53	48.78
3	10°08'09"	276.64	60.00	119.70
4	4°04'55"	226.64	25.90	51.77
5	83°56'50"	29.71	26.72	43.52
6	79°52'49"	29.86	25.00	41.63
7	71°25'27"	25.00	17.97	31.17
8	30°16'25"	217.25	58.77	114.79
9	30°16'25"	277.25	75.00	146.49
10	30°16'44"	480.49	130.00	253.92
11	10°04'00"	540.49	47.60	94.96
12	59°43'35"	113.21	65.00	118.01
13	59°43'35"	163.21	93.71	170.13
14	30°16'44"	171.76	46.47	90.77
15	30°16'44"	221.76	60.00	117.19
16	28°48'41"	147.61	37.91	74.22
17	28°48'41"	197.61	50.76	99.37
18	84°55'38"	25.00	22.88	37.06
19	46°02'57"	141.18	60.00	113.47
20	46°02'57"	191.18	81.25	153.65
21	18°56'15"	299.79	50.00	99.10
22	18°56'15"	349.79	58.39	115.61
23	46°02'57"	272.40	115.76	218.93
24	46°02'57"	322.40	137.01	259.11
25	89°59'41"	25.00	25.00	39.27
26	90°00'19"	24.11	25.00	39.27
27	90°00'54"	24.99	25.00	39.27
28	89°59'06"	25.01	25.00	39.27
29	90°00'00"	25.00	25.00	39.27
30	11°25'18"	252.25	25.25	50.33
31	11°32'04"	250.06	25.26	50.34



Scale 1"=100'

#66
U. S. EAST HIGHWAY

PLAN & SURVEY
BY
R. W. THOMAS
214 N. HARVEY CE 6-4313
Oklahoma City, Oklahoma

Sheet 2 - REPLAT OF RANCHWOOD HILLS ADD.