

FINAL PLAT

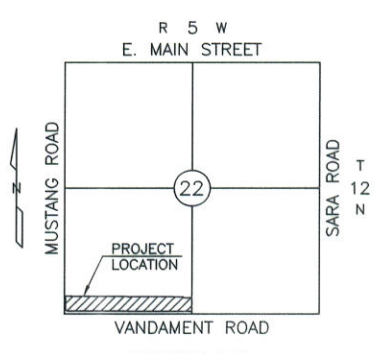
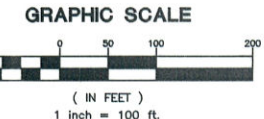
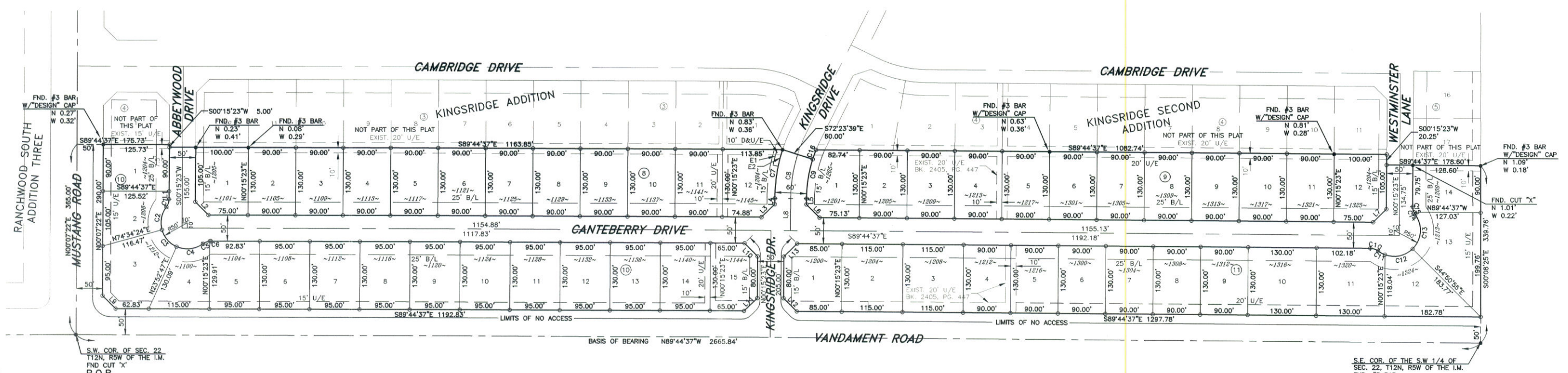
of

# KINGSRIDGE ADDITION

SECTION 3

PART OF THE S.W. 1/4 OF SECTION 22, T12N, R5W OF THE I.M.  
YUKON, CANADIAN COUNTY, OKLAHOMA

Doc#: P 2005 17  
Bk4Pg: PL 9 57-58  
Filed: 05-19-2005  
11:19:20 AM  
MRL  
PL  
Canadian County, OK



**\*\*\*\*\* NOTE \*\*\*\*\***  
THIS SURVEY MEETS THE OKLAHOMA MINIMUM STANDARDS FOR THE PRACTICE OF LAND SURVEYORS AS ADOPTED BY THE OKLAHOMA STATE BOARD OF REGISTRATION FOR PROFESSIONAL ENGINEERS AND LAND SURVEYORS, AND THAT SAID FINAL PLAT COMPLIES WITH THE REQUIREMENTS OF TITLE 11 SECTION 41-108 OF THE OKLAHOMA STATE STATUTES.

EASEMENT TABLE						
CURVE	LENGTH	RADIUS	TANGENT	CHORD LENGTH	CHORD DIRECTION	DELTA
E1	31.02'	332.12'	15.52'	31.01'	N13°59'32"E	5°21'04"
E2	33.03'	322.12'	16.53'	33.02'	N14°15'16"E	5°52'32"

LINE TABLE		
LINE	LENGTH	BEARING
L1	15.00'	N00°15'23"E
L2	35.36'	S44°44'37"E
L3	35.36'	N45°15'23"E
L4	11.17'	N00°15'23"E
L5	11.17'	N00°15'23"E
L6	35.36'	S44°44'37"E
L7	35.36'	N45°15'23"E
L8	61.17'	S00°15'23"W
L9	35.40'	S44°48'38"E
L10	35.36'	N44°44'37"W
L11	35.36'	S45°15'23"W
L12	35.36'	N44°44'37"W
L13	35.36'	S45°15'23"W

CURVE TABLE						
CURVE	LENGTH	RADIUS	TANGENT	CHORD LENGTH	CHORD DIRECTION	DELTA
C1	16.09'	25.00'	8.33'	15.81'	N18°41'29"E	36°52'12"
C2	45.86'	50.00'	24.69'	44.27'	S10°50'59"W	52°33'11"
C3	44.24'	50.00'	23.68'	42.81'	S40°46'25"E	50°41'37"
C4	52.79'	50.00'	29.16'	50.37'	N83°37'59"E	60°29'36"
C5	13.92'	25.00'	7.14'	13.74'	S69°20'08"W	31°53'53"
C6	2.17'	25.00'	1.09'	2.17'	S87°46'14"W	4°58'19"
C7	95.21'	322.12'	47.96'	94.87'	S44°43'28"W	16°56'09"
C8	86.13'	292.12'	43.38'	85.82'	S08°42'11"W	16°53'36"
C9	95.97'	262.12'	48.53'	95.44'	S10°44'44"W	20°58'41"
C10	16.09'	25.00'	8.33'	15.81'	N71°18'31"W	36°52'12"
C11	14.64'	50.00'	7.37'	14.59'	S61°15'48"E	16°46'45"
C12	56.89'	50.00'	31.97'	53.87'	N77°44'57"E	16°46'45"
C13	71.35'	50.00'	43.28'	65.45'	N04°16'08"E	81°45'54"
C14	5.53'	25.00'	2.78'	5.52'	S30°16'33"E	12°40'31"
C15	10.56'	25.00'	5.36'	10.48'	S11°50'28"E	24°11'41"
C16	18.93'	262.12'	9.47'	18.92'	N19°13'05"E	4°08'13"

- DENOTES FND. #3 BAR w/CAP STAMPED "J&A 1484" UNLESS OTHERWISE NOTED
- DENOTES SET #3 BAR w/CAP STAMPED "J&A 1484" UNLESS OTHERWISE NOTED

FINAL PLAT  
of  
**KINGSRIDGE ADDITION**  
SECTION 3

Johnson & Associates, Inc.  
100 E. California Ave. - Third Floor  
Oklahoma City, OK 73104  
(405) 235-0875 FAX (405) 235-0878  
Certificate of Authorization #1484 Exp. Date: 06-30-2005  
ENGINEERS • SURVEYORS • PLANNERS