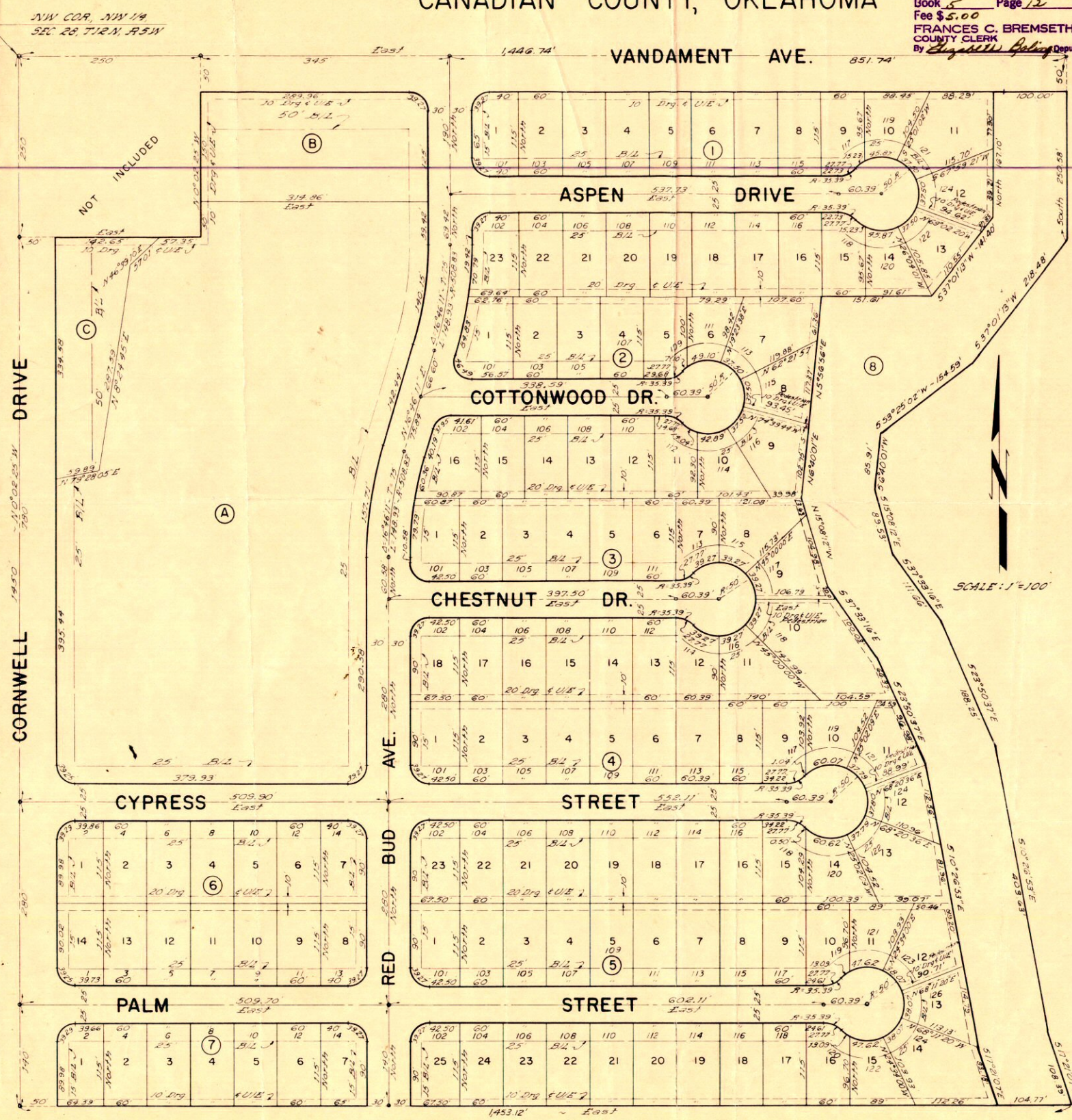


GLENWOOD SECOND ADDITION

A SUBDIVISION OF PART OF THE NW 1/4, SEC. 28, T12N, R5W, I.M.
 YUKON, OKLAHOMA
 CANADIAN COUNTY, OKLAHOMA

State of Oklahoma }
 Canadian County } SS
 Filed for record Aug. 23 19 72
 at 1:20 P. M and recorded in
 Book 5 Page 12
 Fee \$5.00
 FRANCES C. BREMSETH
 COUNTY CLERK
 By Elizabeth Poling Deputy



A part of the NW 1/4, Section 28, T12N, R5W, I.M., Canadian County, Oklahoma and more particularly described as follows:

Beginning at a point on the North line of said NW 1/4, said point being 1446.74 feet East of the NW corner of said NW 1/4; THENCE South a distance of 250.58 feet; THENCE 537°01'13"W a distance of 218.48 feet; THENCE 553°25'02"W a distance of 154.59 feet; THENCE 56°40'01"W a distance of 85.91 feet; THENCE 515°08'12"E a distance of 89.53 feet; THENCE 537°33'16"E a distance of 111.66 feet; THENCE 523°50'37"E a distance of 188.25 feet; THENCE 510°26'53"E a distance of 403.63 feet; THENCE 517°21'07"E a distance of 108.39 feet; THENCE West a distance of 1453.12 feet to a point on the West line of said NW 1/4; THENCE N0°02'25"W a distance of 1200.00 feet; THENCE East a distance of 250.00 feet; THENCE N0°02'25"W a distance of 250.00 feet to a point on the North line of said NW 1/4; THENCE East a distance of 1196.74 feet to the point or place of Beginning containing 43.48 Acres more or less.

NOTE:
 All Block Corners Have A 25 Radius.
 NOTE: Fences will not be Permitted Across Pedestrian Easements.

DAVILA ENGINEERING CO.
 7300 N.W. 23RD, Bethany Okla