

This reproduction meets the requirements as outlined in Senate Bill 377, Section 518, as amended.

TRIANGLE/A & E, Inc.
BOX 304 OKLAHOMA CITY 73101

FIRST NATIONAL OFFICE PARK

PART OF THE S.E. 1/4, SEC. 19, T.12N, R.5W, I.M.

YUKON, OKLAHOMA
CANADIAN COUNTY, OKLAHOMA

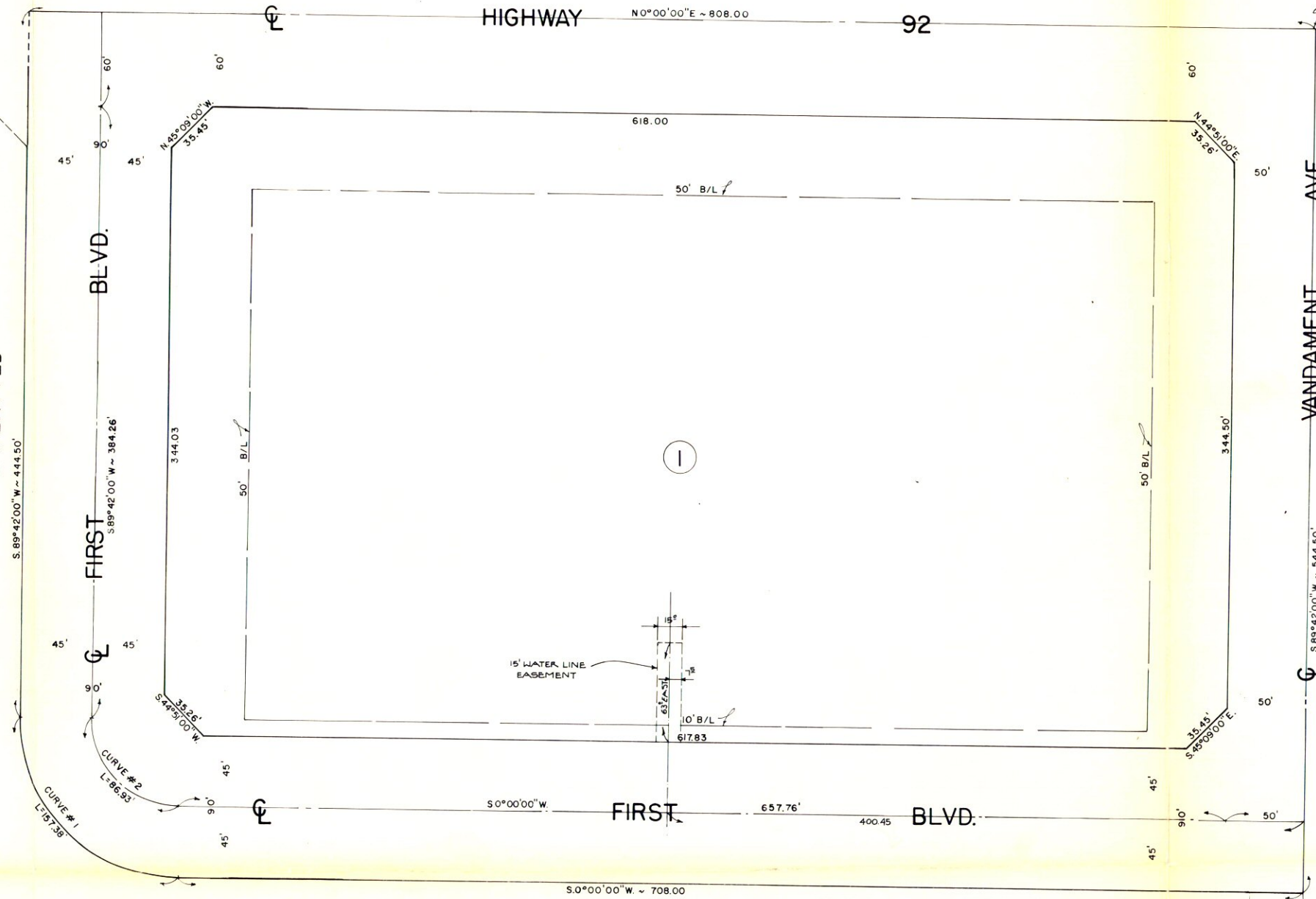
13



SCALE = 1" = 40'

CURVE DATA			
	Δ	R	L
1.	89°42'00"	100.52'	L=157.38'
2.	89°42'00"	55.52'	L=88.93'

UNPLATTED



UNPLATTED

ALL BLOCK CORNERS HAVE 25' SIGHT TRIANGLES UNLESS OTHERWISE NOTED.

PERMANENCY CERTIFICATE
I DO HEREBY CERTIFY THAT THIS PLAT FULFILLS THE PERMANENCY REQUIREMENTS OKLAHOMA STATUTES

E.D. Hill, Jr.
E.D. HILL, JR.

E. D. HILL
SURVEYING & ENGINEERING Co.
320 ROBERT S. KERR AVENUE
OKLAHOMA CITY, OKLAHOMA TELE 405 232-2208