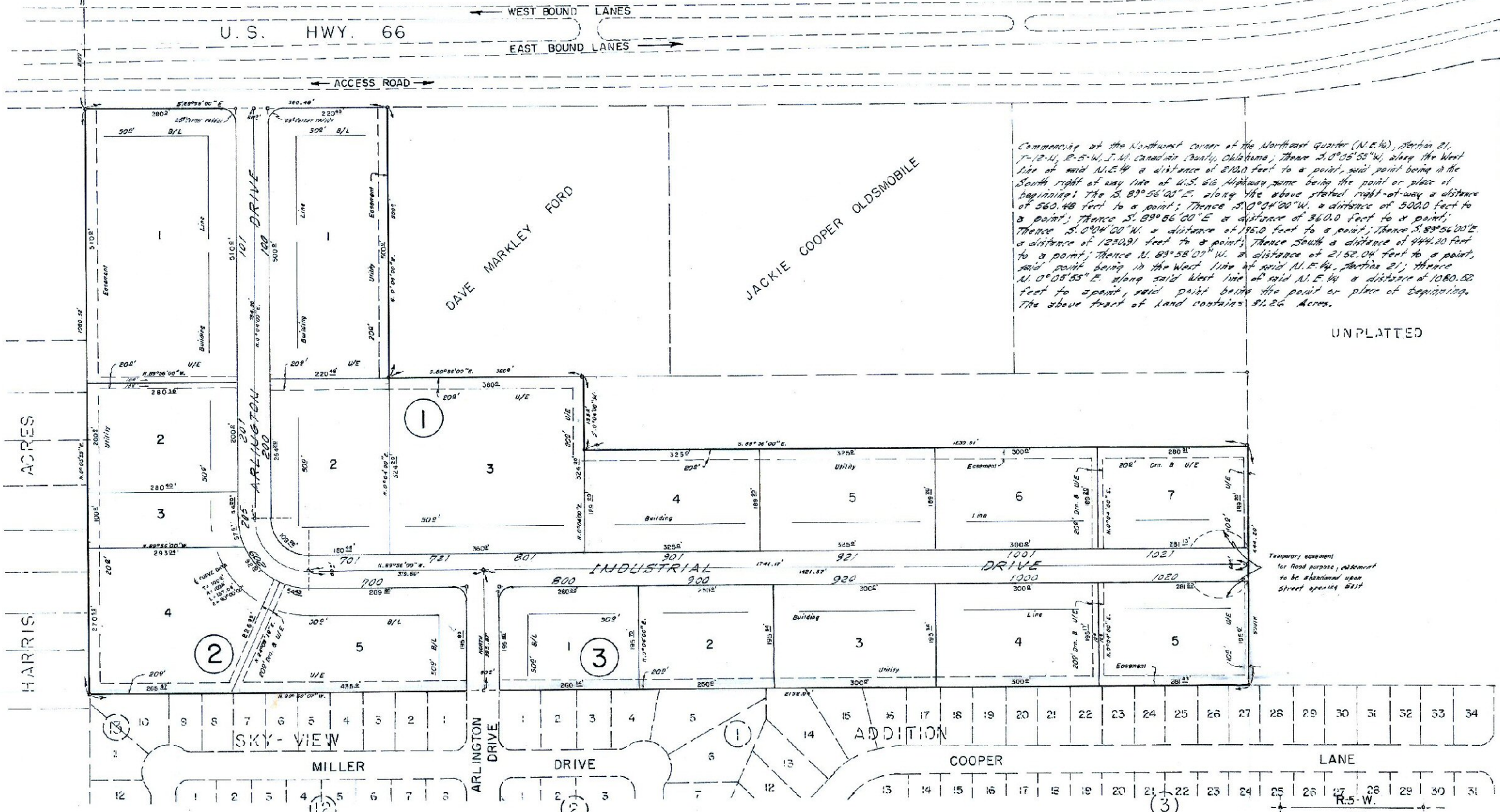


# COOPERVILLE INDUSTRIAL PARK

A SUBDIVISION OF A PART OF THE N.E. 1/4, SECTION 21, T-12-N., R-5-W., I.M.

YUKON, OKLAHOMA  
CANADIAN COUNTY, OKLAHOMA

N.W. CORNER N.E. 1/4, SECTION 21,  
T-12-N., R-5-W., I.M.

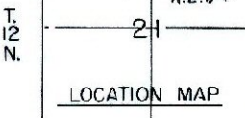


Commencing at the Northwest corner of the Northeast Quarter (N.E. 1/4), Section 21, T-12-N., R-5-W., I.M. Canadian County, Oklahoma; Thence S. 0° 05' 55" W., along the West line of said N.E. 1/4 a distance of 2,120 feet to a point, said point being in the South right of way line of U.S. 66 Highway same being the point or place of beginning; Thence S. 83° 56' 00" E., along the above stated right-of-way a distance of 560.48 feet to a point; Thence S. 0° 04' 00" W., a distance of 5,000 feet to a point; Thence S. 89° 56' 00" E. a distance of 360.0 feet to a point; Thence S. 0° 04' 00" W. a distance of 176.0 feet to a point; Thence S. 89° 56' 00" E. a distance of 1,230.91 feet to a point; Thence South a distance of 444.20 feet to a point; Thence N. 69° 56' 00" W. a distance of 2,152.04 feet to a point, said point being in the West line of said N.E. 1/4, Section 21; Thence N. 0° 05' 55" E., along said West line of said N.E. 1/4, Section 21, a distance of 1,080.52 feet to a point, said point being the point or place of beginning. The above tract of land contains 91.26 Acres.

UNPLATTED

UNPLATTED

SCALE: 1" = 100'



PREPARED BY  
**HARRY F. HULETT, JR.**  
REGISTERED PROFESSIONAL CIVIL ENGINEER  
106 N.E. 46th Street  
524-6443  
Oklahoma City, Oklahoma