

191 SEP 23 A 8:59
 COUNTY CLERK
 Book Page
 8 229

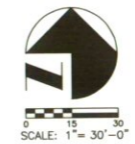
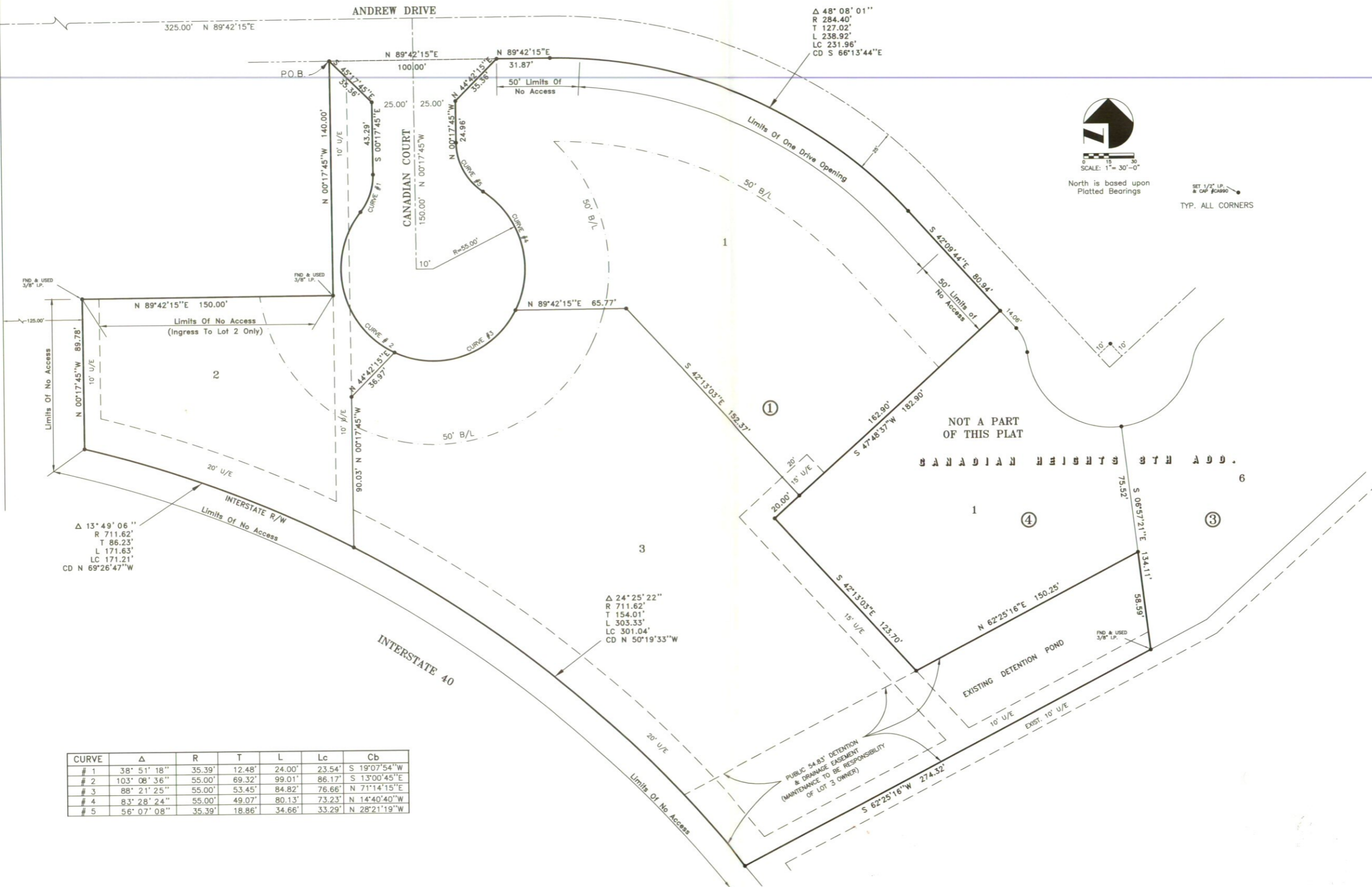


CANADIAN VIEW ADDITION

A REPLAT OF PART OF LOT 1, BLOCK 4, CANADIAN HEIGHTS 8TH ADDITION
 CITY OF YUKON, CANADIAN COUNTY, OKLAHOMA

NW COR. SEC. 29
 T12N, R5W

GARTH BROOKS BOULEVARD (S.H. 92)



North is based upon
 Platted Bearings

SET 1/2" I.P.
 & CAP #04990
 TYP. ALL CORNERS

CURVE	Δ	R	T	L	Lc	Cb
# 1	38° 51' 18"	35.39'	12.48'	24.00'	23.54'	S 19°07'54"W
# 2	103° 08' 36"	55.00'	69.32'	99.01'	86.17'	S 13°00'45"E
# 3	88° 21' 25"	55.00'	53.45'	84.82'	76.66'	N 71°14'15"E
# 4	83° 28' 24"	55.00'	49.07'	80.13'	73.23'	N 14°40'40"W
# 5	56° 07' 08"	35.39'	18.86'	34.66'	33.29'	N 28°21'19"W

Δ 13° 49' 06"
 R 711.62'
 T 86.23'
 L 171.63'
 LC 171.21'
 CD N 69°26'47"W

Δ 24° 25' 22"
 R 711.62'
 T 154.01'
 L 303.33'
 LC 301.04'
 CD N 50°19'33"W

Δ 48° 08' 01"
 R 284.40'
 T 127.02'
 L 238.92'
 LC 231.96'
 CD S 66°13'44"E

NOT A PART
 OF THIS PLAT

CANADIAN HEIGHTS 8TH ADD.

1 ④

③

PUBLIC 54.83' DETENTION
 & DRAINAGE EASEMENT
 (MAINTENANCE TO BE RESPONSIBILITY
 OF LOT 3 OWNER)

EXISTING DETENTION POND

REVISED: 7/23/97
 This Plat Meets The Oklahoma Minimum Standard
 For The Practice Of Land Surveying

