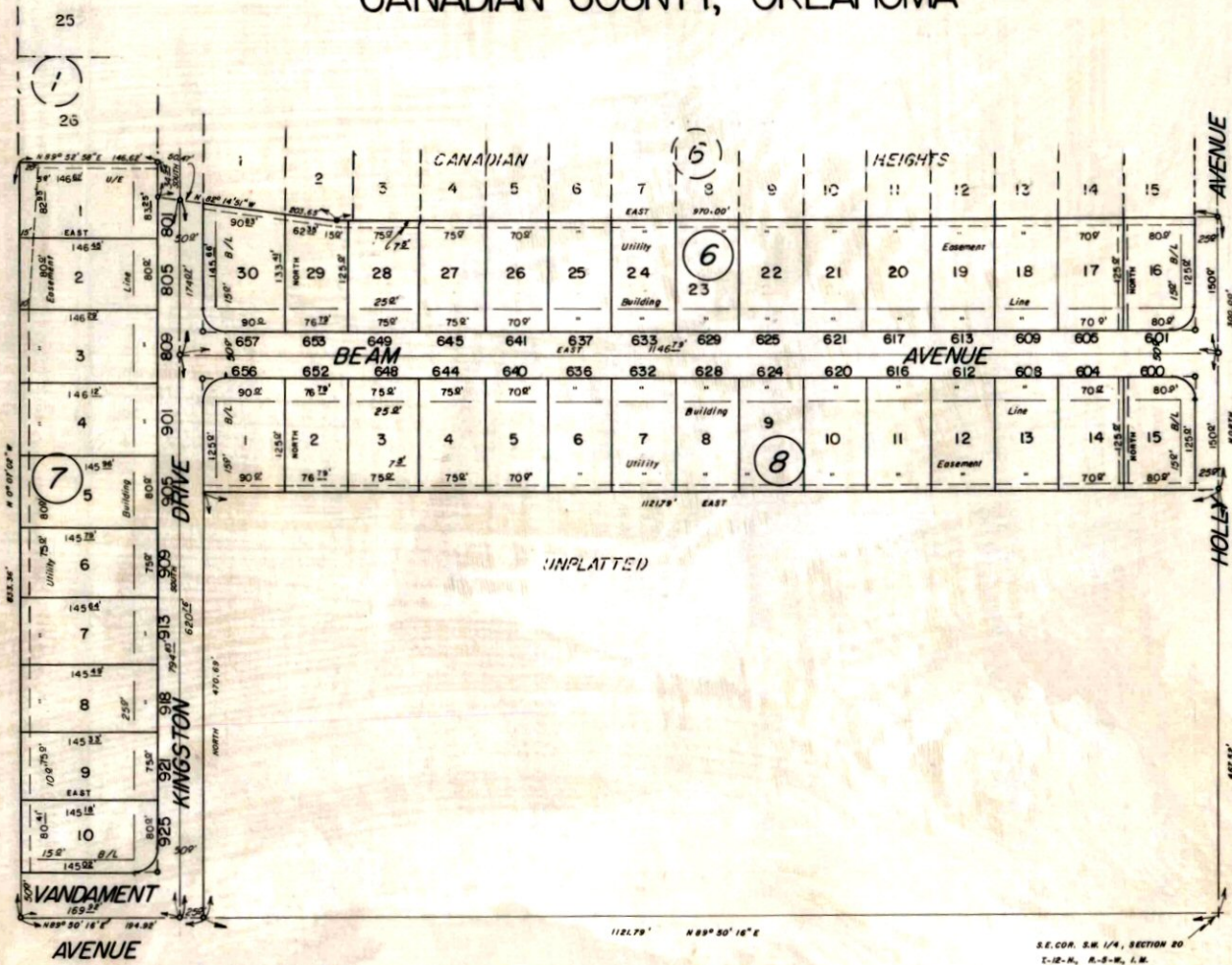


CANADIAN HEIGHTS

(SECTION 2)

A SUBDIVISION OF A PART OF THE E.1/2, S.W. 1/4, SEC. 20, T-12-N., R-5-W, I.M.

YUKON, OKLAHOMA
CANADIAN COUNTY, OKLAHOMA



PREPARED	BY
HARRY F. HULETT, JR.	
REGISTERED PROFESSIONAL CIVIL ENGINEER	
5121 N. Shartel	
VI 3-0453	
Oklahoma City, Oklahoma	

44