

To be published in The Yukon Review on or before Saturday, November 2, 2019, published on the City of Yukon's website on or before Monday, November 4, 2019, and mailed or emailed to persons who have registered with the City of Yukon to receive notification of TIF-related public hearings on or before Monday, November 4, 2019:

NOTICE TO THE PUBLIC OF TWO PUBLIC HEARINGS REGARDING THE PROPOSED YUKON-FRISCO/VANDAMENT ECONOMIC DEVELOPMENT PROJECT PLAN

Pursuant to the Oklahoma Local Development Act, 62 O.S. § 850, *et seq.* (“Act”), notice is hereby given to all interested persons that the Yukon City Council will hold two public hearings regarding the Yukon-Frisco/Vandament Economic Development Project Plan (“Project Plan”) and its proposed Increment District No. 2, City of Yukon, a sales tax increment district (“Increment District No. 2”).

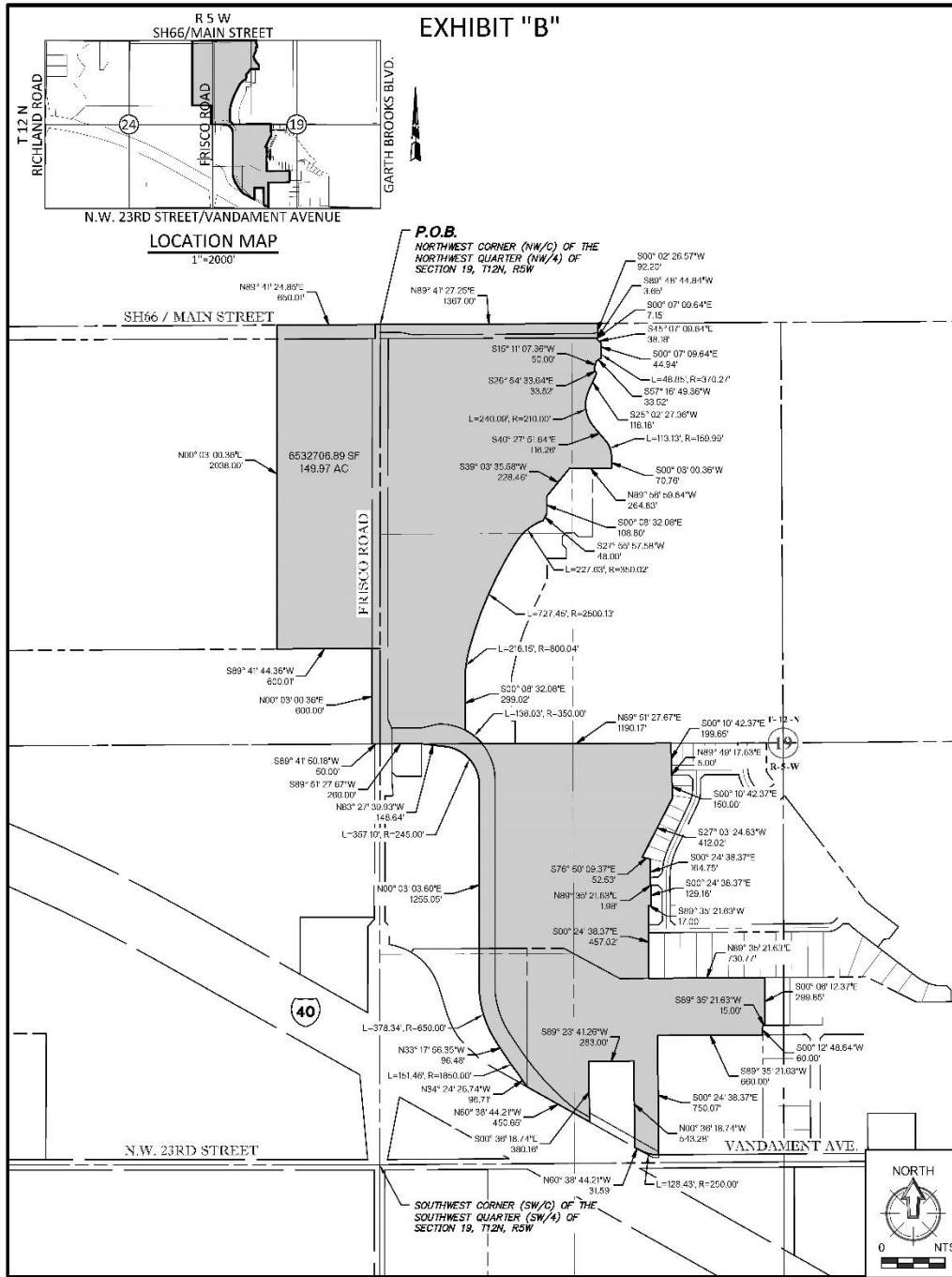
Both public meetings will be held in the Council Chambers at the Centennial Building, 12 South Fifth Street, Yukon. The first public hearing will be at 7:00 p.m. on Tuesday, November 19, 2019, and will be for the purpose of providing information, including an analysis of potential positive or negative impacts, and answering questions regarding the proposed Project Plan and Increment District No. 2. The second public hearing will be held at 7:00 p.m. on Tuesday, December 3, 2019, and will be for the purpose of giving members of the public an opportunity to be heard prior to any vote on the proposed Project Plan and Increment District No. 2.

The Project Plan establishes the Increment District No. 2 in support of a project by the City of Yukon to provide an economic structure and funding mechanism authorized by the Act for the local public investment necessary to generate private investment and construction of a commercial mixed-use project located in the Project Area adjacent to Frisco Road and north of Interstate 40 and Vandament Avenue. Public Funding will be generated by the implementation of the Increment District No. 2. No public debt is being incurred. No new or increased taxes are involved.

A draft of the proposed Project Plan, which includes an analysis of the project's eligibility and financial impacts, may be reviewed by any person interested, in the Office of the City Clerk at Yukon City Hall, 500 West Main Street, Yukon, Oklahoma 73099, during normal business hours from 8:00 a.m. to 5:00 p.m., Monday through Friday, and at the following web address on or after 5:00 p.m. on Monday, November 4, 2019: <http://www.yukonok.gov/city-departments/economic-development-authority/>

The proposed project area (“Project Area”) is identical with the Increment District No. 2, and can be generally described as the area adjacent to Frisco Road and north of Interstate 40 and Vandament Avenue. The specific boundaries of the proposed Project Area/Increment District No. 2 are illustrated and described below.

Map of Increment District No. 2:



Project Area / Increment District No. 2 Legal Description:

The boundaries of the Project Area and Increment District No. 2 are coextensive. Their boundaries are described below.

A tract of land lying in the East Half of Section 24 and the West Half of Section 19, Township 12 North, Range 5 West of the Indian Meridian, City of Yukon, Canadian County, Oklahoma, and being more particularly described as follows:

Beginning at the Northwest Corner (NW/C) of the Northwest Quarter (NW/4) of Section 19, Township 12 North, Range 5 West:

Thence North $89^{\circ}41'27.25''$ East along the North line of the Northwest Quarter (NW/ 4) of said Section 19 a distance of 1,367.00 feet;

Thence South $00^{\circ}02'26.57''$ West a distance of 92.20 feet;

Thence South $89^{\circ}48'44.84''$ West a distance of 3.65 feet;

Thence South $00^{\circ}07'09.64''$ East a distance of 7.15 feet;

Thence South $45^{\circ}07'09.64''$ East a distance of 38.18 feet;

Thence South $00^{\circ}07'09.64''$ East a distance of 44.94 feet;

Thence along a curve to the right having a distance of 48.85 feet, a radius of 370.27 feet, a Chord Bearing of South $03^{\circ}39'35.35''$ West, a Chord Length of 48.81 feet;

Thence South $57^{\circ}16'49.36''$ West a distance of 33.52 feet;

Thence South $15^{\circ}11'07.36''$ West a distance of 50.00 feet;

Thence South $26^{\circ}54'33.64''$ East a distance of 33.52 feet;

Thence South $25^{\circ}02'27.36''$ West a distance of 118.18 feet;

Thence along a curve to the left having a distance of 240.09 feet, a radius of 210.00 feet, a Chord Bearing of South $07^{\circ}42'41.64''$ East, a Chord Length of 227.23 feet;

Thence South $40^{\circ}27'51.64''$ East a distance of 116.26 feet;

Thence along a curve to the right having a distance of 113.13 feet, a radius of 159.99 feet, a Chord Bearing of South $20^{\circ}12'25.64''$ East, a Chord Length of 110.79 feet;

Thence South $00^{\circ}03'00.36''$ West a distance of 70.76 feet;

Thence North $89^{\circ}56'59.64''$ West a distance of 264.63 feet;

Thence South $39^{\circ}03'35.58''$ West a distance of 228.46 feet;

Thence South $00^{\circ}08'32.08''$ East a distance of 108.80 feet;

Thence South $27^{\circ}55'57.58''$ West a distance of 48.00 feet;

Thence along a curve to the left having a distance of 227.63 feet, a radius of 350.02 feet, a Chord Bearing of South $50^{\circ}38'22.86''$ West, a Chord Length of 223.64 feet;

Thence along a curve to the left having a distance of 727.45 feet, a radius of 2,500.13 feet, a Chord Bearing of South $23^{\circ}40'22.64''$ West, a Chord Length of 724.88 feet;

Thence along a curve to the left having a distance of 216.15 feet, a radius of 800.04 feet, a Chord Bearing of South $07^{\circ}35'51.33''$ West, a Chord Length of 215.49 feet;

Thence South $00^{\circ}08'32.08''$ East a distance of 299.02 feet;

Thence along a curve to the right having a distance of 138.03 feet, a radius of 350.00 feet, a Chord Bearing of South $51^{\circ}26'42.86''$ East, a Chord Length of 137.13 feet;

Thence North $89^{\circ}51'27.67''$ East a distance of 1,190.17 feet;

Thence South $00^{\circ}10'42.37''$ East a distance of 199.65 feet;

Thence North $89^{\circ}49'17.63''$ East a distance of 5.00 feet;

Thence South $00^{\circ}10'42.37''$ East a distance of 150.00 feet;

Thence South $27^{\circ}03'24.63''$ West a distance of 412.02 feet;

Thence South $76^{\circ}50'09.37''$ East a distance of 52.53 feet;

Thence South $00^{\circ}24'38.37''$ East a distance of 164.75 feet;

Thence North $89^{\circ}35'21.63''$ East a distance of 1.98 feet;

Thence South $00^{\circ}24'38.37''$ East a distance of 129.16 feet;

Thence South 89°35'21.63" West a distance of 17.00 feet;
Thence South 00°24'38.37" East a distance of 457.02 feet;
Thence North 89°35'21.63" East a distance of 730.77 feet;
Thence South 00°06'12.37" East a distance of 299.85 feet;
Thence South 89°35'21.63" West a distance of 15.00 feet;
Thence South 00°12'48.64" West a distance of 60.00 feet;
Thence South 89°35'21.63" West a distance of 660.00 feet;
Thence South 00°24'38.37" East a distance of 750.07 feet;
Thence along a curve to the right having a distance of 128.43 feet, a radius of 250.00 feet, a Chord Bearing of North 75°21'44.35" West, a Chord Length of 127.02 feet;
Thence North 60°38'44.21" West a distance of 31.59 feet;
Thence North 00°36'18.74" West a distance of 543.28 feet;
Thence South 89°23'41.26" West a distance of 283.00 feet;
Thence South 00°36'18.74" East a distance of 380.16 feet;
Thence North 60°38'44.21" West a distance of 450.65 feet;
Thence North 34°24'26.74" West a distance of 96.71 feet;
Thence along a curve to the right having a distance of 151.46 feet, a radius of 1,850.00 feet, a Chord Bearing of North 35°38'39.65" West, a Chord Length of 151.41 feet;
Thence North 33°17'56.35" West a distance of 96.48 feet;
Thence along a curve to the right having a distance of 378.34 feet, a radius of 650.00 feet, a Chord Bearing of North 16°37'26.38" West, a Chord Length of 373.02 feet;
Thence North 00°03'03.60" East a distance of 1,255.05 feet;
Thence along a curve to the left having a distance of 357.10 feet, a radius of 245.00 feet, a Chord Bearing of North 41°42'18.17" West, a Chord Length of 326.32 feet;
Thence North 83°27'39.93" West a distance of 148.64 feet to a point on the South line of the Northwest Quarter (NW/ 4) of Section 19;
Thence South 89°51'27.67" West along said South line a distance of 260.00 feet to the Southeast Corner (SE/C) of the Northeast Quarter (NE/4) of Section 24;
Thence South 89°41'50.18" West along the South line of the Northeast Quarter (NE/4) of Section 24 a distance of 50.00 feet to a point on the West Right-Of-Way line of Frisco Road;
Thence North 00°03'00.36" East along the West Right-Of-Way line a distance of 600.00 feet;
Thence South 89°41'44.36" West a distance of 600.01 feet;
Thence North 00°03'00.36" East a distance of 2,038.00 feet to a point on the North line of the Northeast Quarter (NE/4) of Section 24;
Thence North 89°41'24.85" East along said North line a distance of 650.01 feet to the Point of Beginning.
Said tract of land contains 6,532,706.89 square feet or 149.97 acres, more or less.